

Dependency of Geodynamic Parameters on the GNSS Constellation

S. Scaramuzza,
R. Dach, G. Beutler, D. Arnold, A. Jäggi

Astronomical Institute, University of Bern, Switzerland

Session: Plenary #06 — Reference Frame
IGS Workshop, 08.–12. February 2016, Sydney, Australia

Overview

Introduction and Motivation

Geocenter Parameters

Earth Rotation Parameters

Summary and Conclusion

Levels of Multi-GNSS Analysis

GPS

GLONASS

recCLK

CRD

TRP

GCC

ERP

ORB

satCLK

Levels of Multi-GNSS Analysis

GPS

GLONASS

recCLK+ISB

CRD

TRP

GCC

ERP

ORB

satCLK

Levels of Multi-GNSS Analysis

GPS

GLONASS

recCLK+ISB

CRD

TRP

GCC

ERP

ORB

satCLK

Levels of Multi-GNSS Analysis

GPS

GLONASS

recCLK+ISB

CRD

TRP

GCC

ERP

ORB

satCLK

Levels of Multi-GNSS Analysis

GPS

GLONASS

recCLK+ISB

CRD

TRP

GCC

ERP

ORB

satCLK

Levels of Multi-GNSS Analysis

GPS

GLONASS

recCLK+ISB

CRD

TRP

GCC

ERP

ORB

satCLK

Update in the CODE Processing

- The daily NEQs may be setup with ERP and GCC parameters per satellite.

Update in the CODE Processing

- The daily NEQs may be setup with **ERP** and **GCC** parameters per satellite.
- Since GPS week 1842 (May 2015) CODE constructs NEQ-files with
 - **plane-wise ERP** (6 for GPS and 3 for GLONASS), and
 - **satellite-wise GCC** parameters.

Update in the CODE Processing

- The daily NEQs may be setup with **ERP and GCC parameters per satellite**.
- Since GPS week 1842 (May 2015) CODE constructs NEQ-files with
 - **plane-wise ERP** (6 for GPS and 3 for GLONASS), and
 - **satellite-wise GCC** parameters.
- By parameter stacking
 - the **IGS solution with one set of ERP and GCC** parameters,

may be constructed.

Update in the CODE Processing

- The daily NEQs may be setup with **ERP** and **GCC** parameters per satellite.
- Since GPS week 1842 (May 2015) CODE constructs NEQ-files with
 - **plane-wise ERP** (6 for GPS and 3 for GLONASS), and
 - **satellite-wise GCC** parameters.
- By parameter stacking
 - the **IGS solution** with **one set** of **ERP** and **GCC** parameters,
 - **system-specific ERP** and **GCC** solutions,

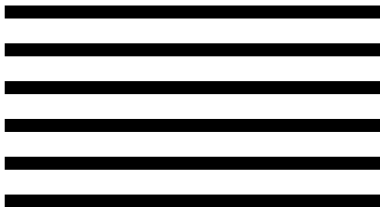
may be constructed.

Update in the CODE Processing

- The daily NEQs may be setup with **ERP** and **GCC** parameters per satellite.
- Since GPS week 1842 (May 2015) CODE constructs NEQ-files with
 - **plane-wise ERP** (6 for GPS and 3 for GLONASS), and
 - **satellite-wise GCC** parameters.
- By parameter stacking
 - the **IGS solution** with **one set** of **ERP** and **GCC** parameters,
 - **system-specific ERP** and **GCC** solutions,
 - ...may be constructed.

Principle of Solution Generation

GPS



GLONASS



Principle of Solution Generation

GPS



ERP(GPS)

GLONASS

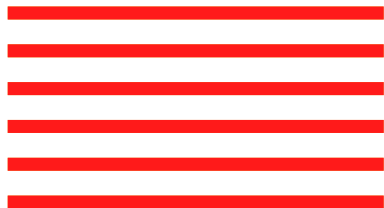


ERP(GLONASS)

Principle of Solution Generation

GPS

GLONASS



ERP(GPS)



ERP(GLONASS)



ERP(Combined)

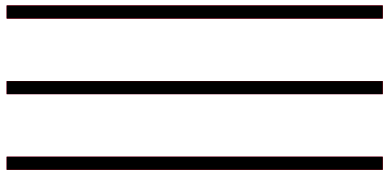
Principle of Solution Generation

GPS



ERP(GPS)

GLONASS

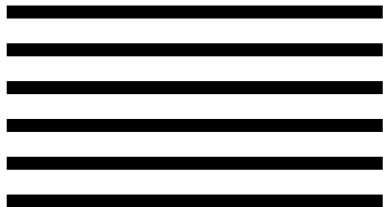


ERP(GLONASS)

ERP(Combined)

Principle of Solution Generation

GPS



GCC(GPS)

GLONASS



GCC(GLONASS)

GCC(Combined)

Geocenter Parameters

Introduction and Motivation

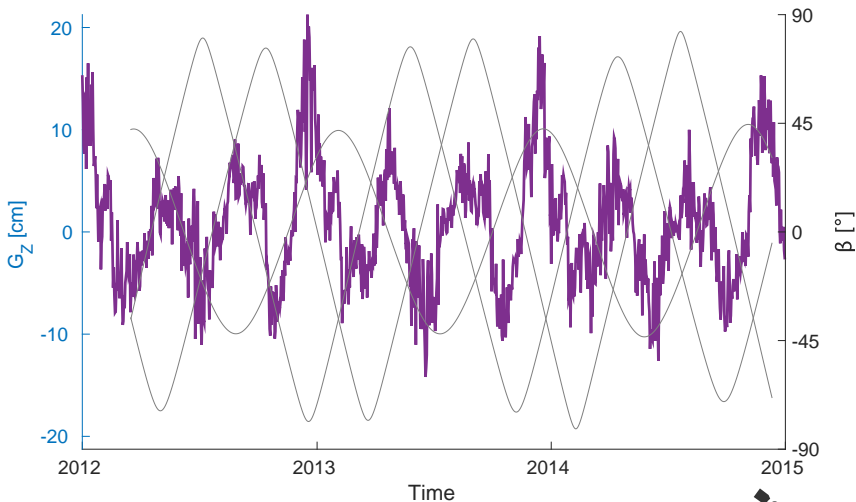
Geocenter Parameters

Earth Rotation Parameters

Summary and Conclusion

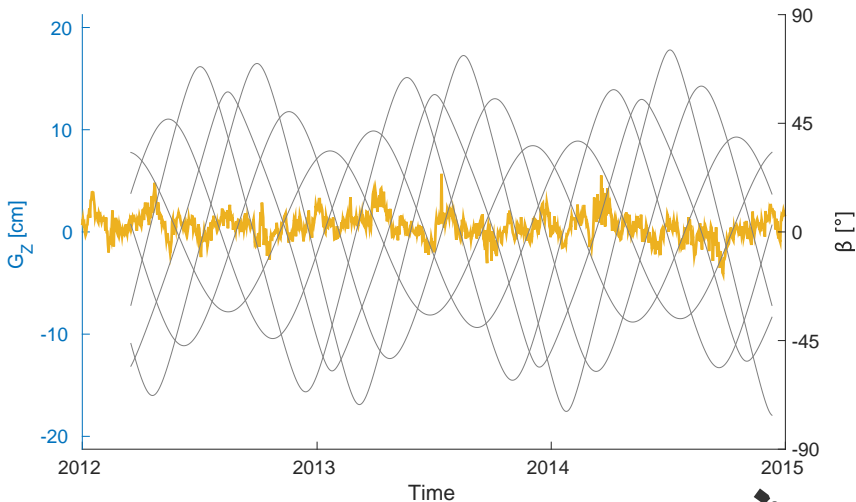
Geocenter Parameters

Time series for GCC estimates: Z component from GLONASS



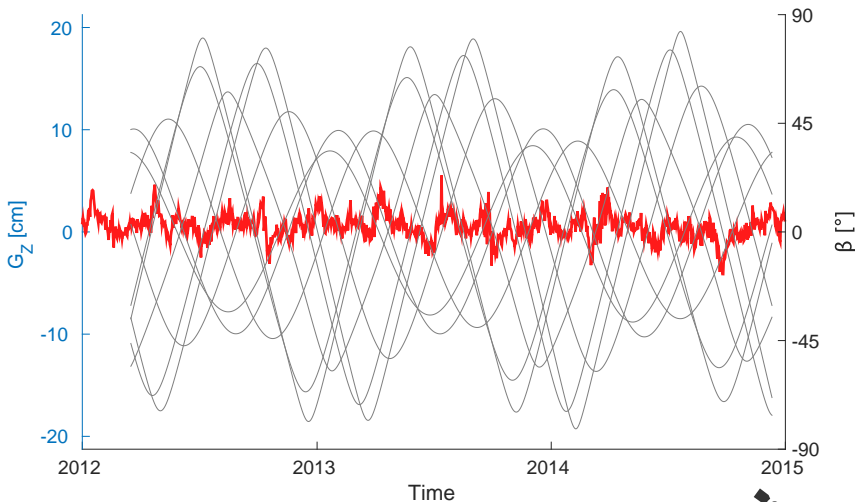
Geocenter Parameters

Time series for GCC estimates: Z component from GPS



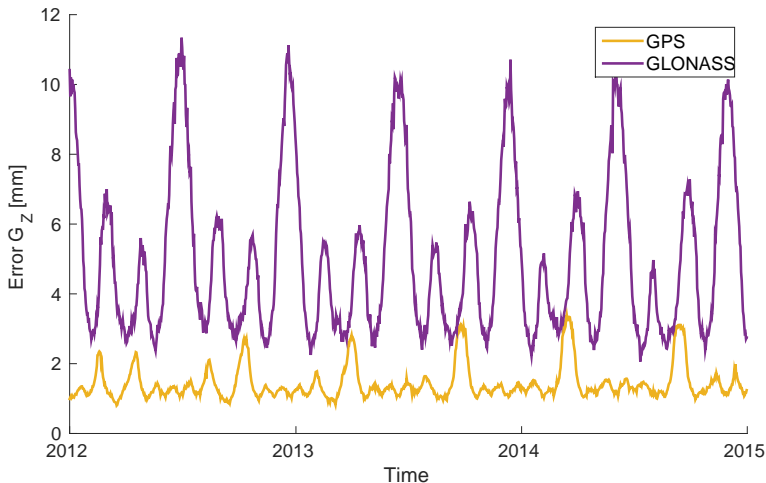
Geocenter Parameters

Time series for GCC estimates: Z component from GPS+GLO



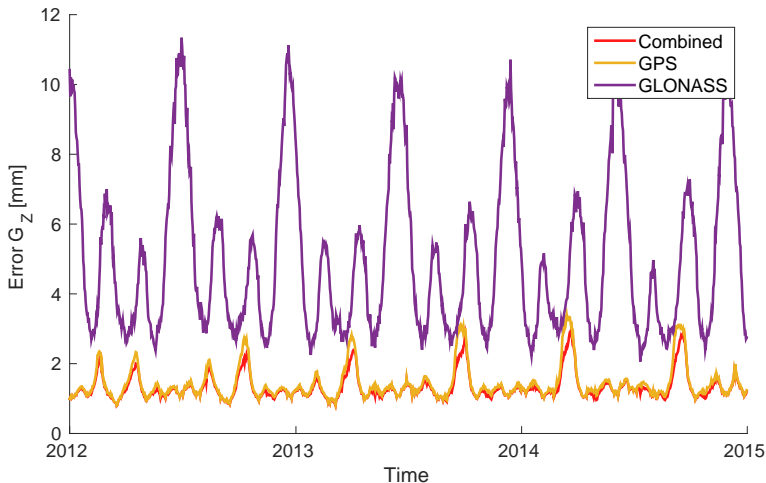
Geocenter Parameters

Formal errors for GCC estimates: Z component



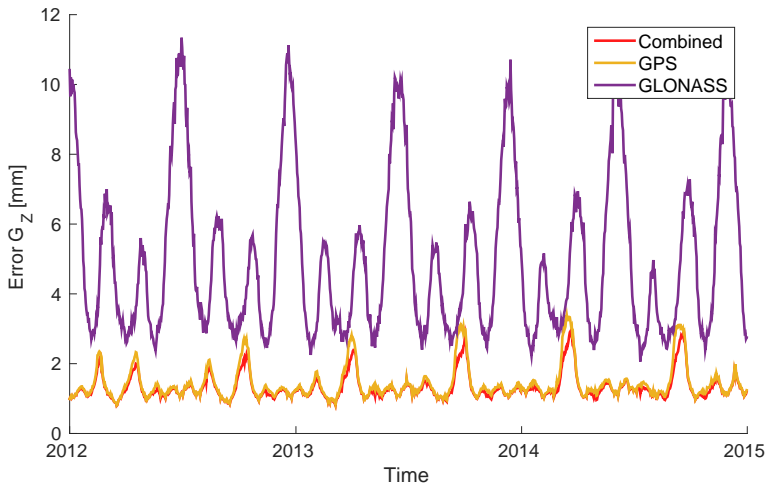
Geocenter Parameters

Formal errors for GCC estimates: Z component



Geocenter Parameters

Formal errors for GCC estimates: Z component



In full agreement to Meindl et al., 2013: DOI 10.1016/j.asr.2012.10.026.

Earth Rotation Parameters

Introduction and Motivation

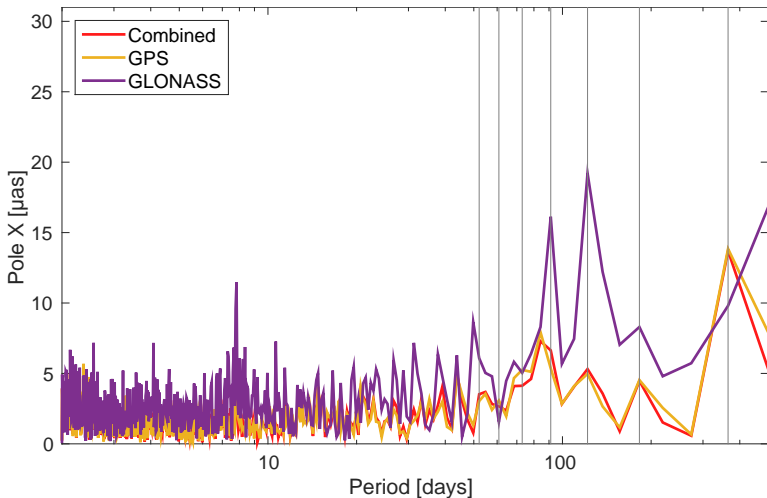
Geocenter Parameters

Earth Rotation Parameters

Summary and Conclusion

Earth Rotation Parameters

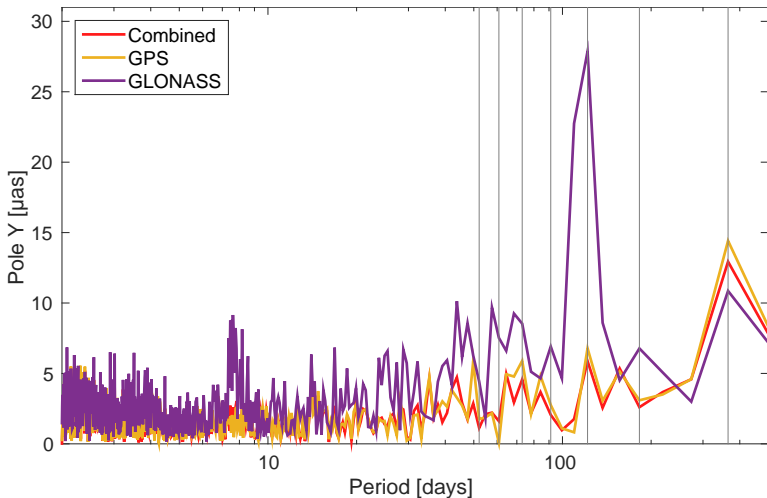
Amplitude spectra from ERP estimates: X component



Differences w.r.t. IERS C04 series (related to ITRF2008) have been analysed.

Earth Rotation Parameters

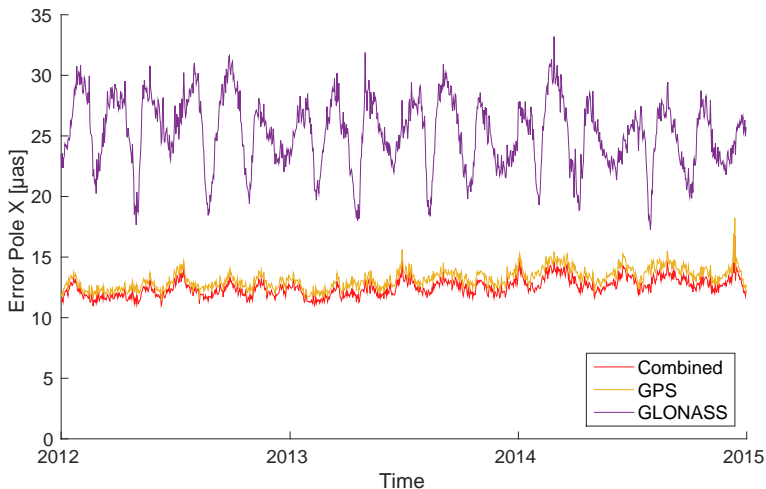
Amplitude spectra from ERP estimates: Y component



Differences w.r.t. IERS C04 series (related to ITRF2008) have been analysed.

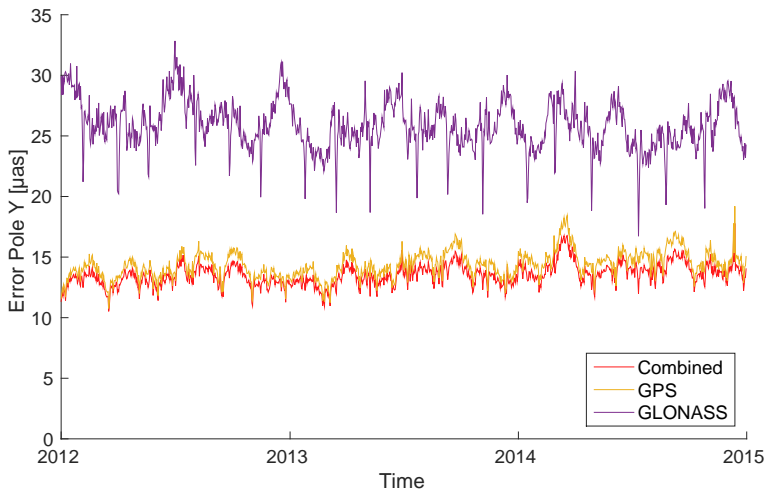
Earth Rotation Parameters

Formal errors for ERP estimates: X component



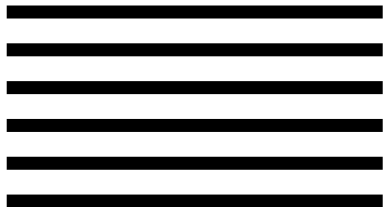
Earth Rotation Parameters

Formal errors for ERP estimates: Y component



Principle of Solution Generation

GPS



GLONASS



ERP(GPS)

ERP(GLONASS)

ERP(Combined)

Principle of Solution Generation

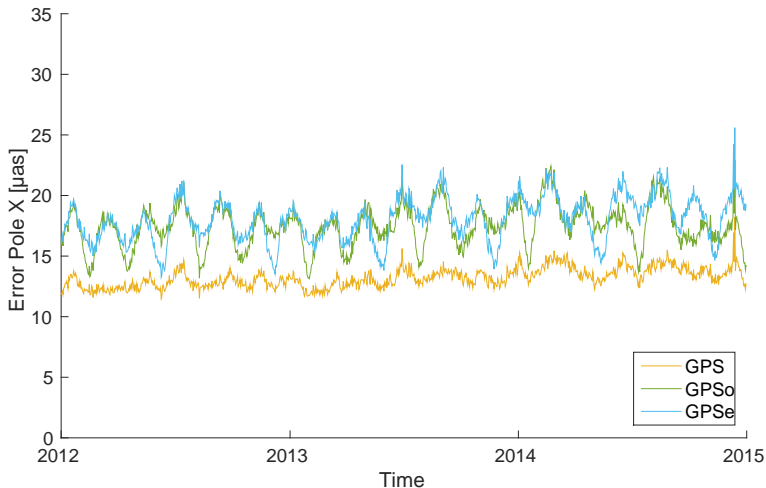
GPS

GLONASS



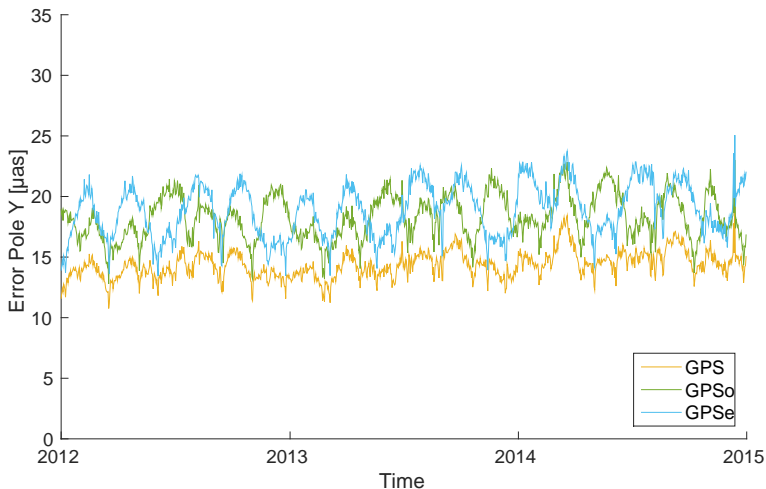
GPS: Two Three-Plane Constellations

Formal errors for ERP estimates: X component



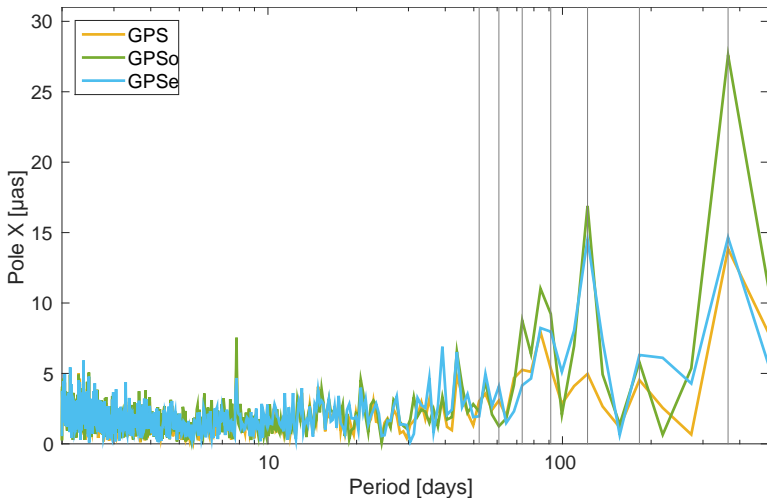
GPS: Two Three-Plane Constellations

Formal errors for ERP estimates: Y component



GPS: Two Three-Plane Constellations

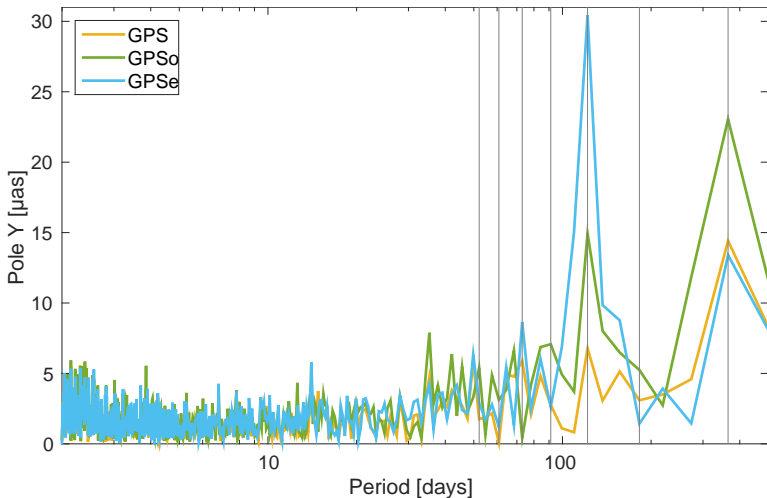
Amplitude spectra from ERP estimates: X component



Differences w.r.t. IERS C04 series (related to ITRF2008) have been analysed.

GPS: Two Three-Plane Constellations

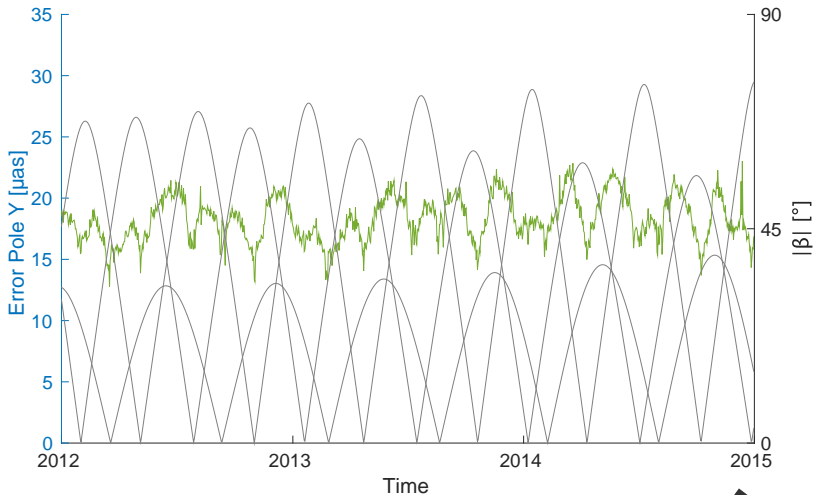
Amplitude spectra from ERP estimates: Y component



Differences w.r.t. IERS C04 series (related to ITRF2008) have been analysed.

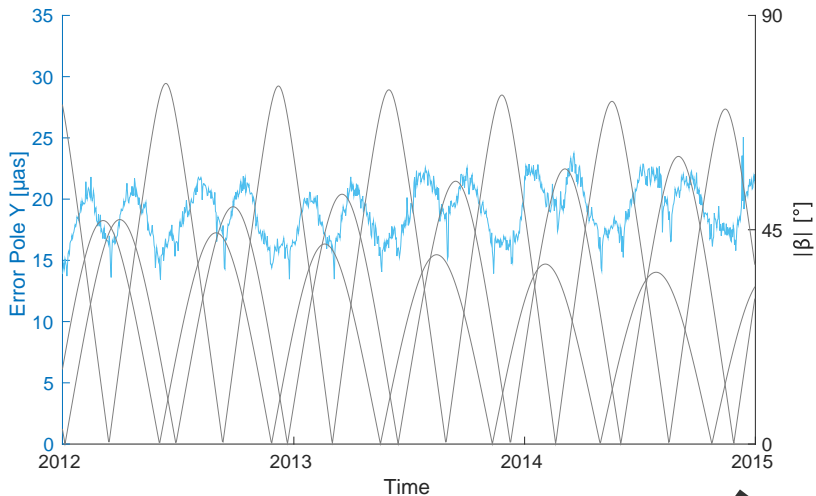
GPS: Two Three-Plane Constellations

Formal errors for ERP estimates: Y component



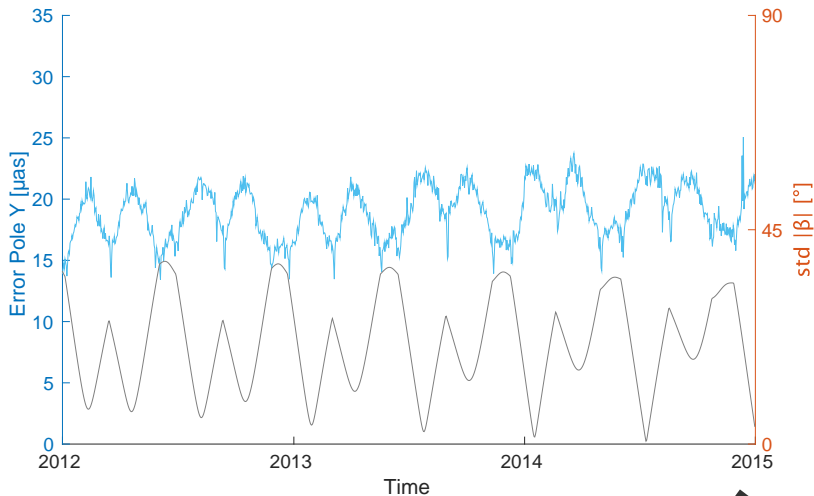
GPS: Two Three-Plane Constellations

Formal errors for ERP estimates: Y component



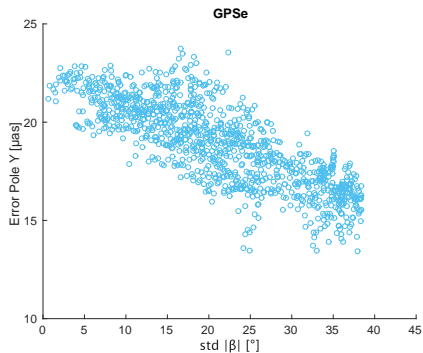
GPS: Two Three-Plane Constellations

Formal errors for ERP estimates: Y component



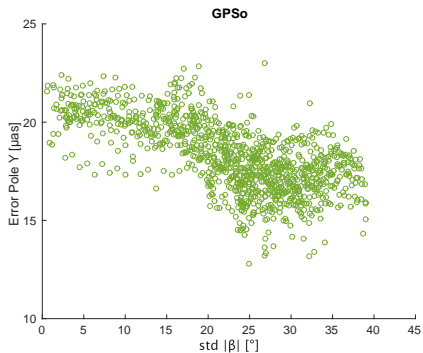
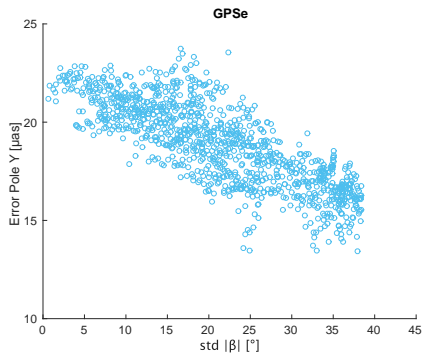
GPS: Two Three-Plane Constellations

Formal errors for ERP estimates: Y component



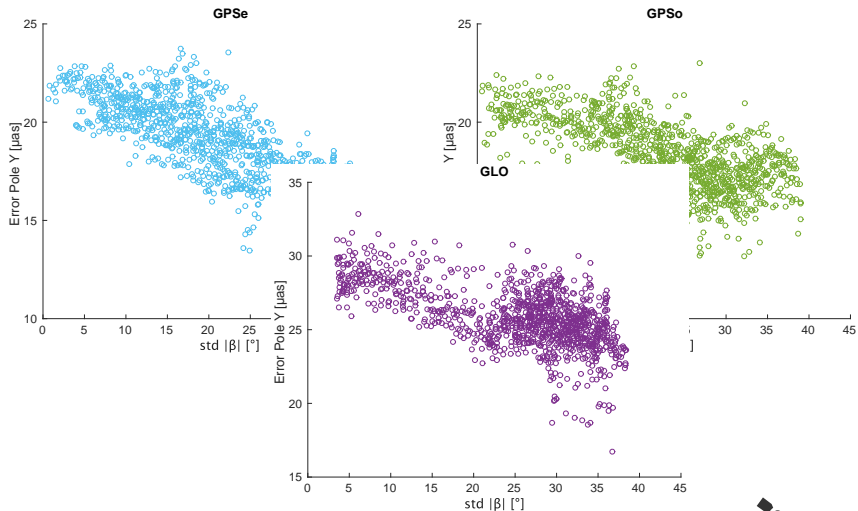
GPS: Two Three-Plane Constellations

Formal errors for ERP estimates: Y component



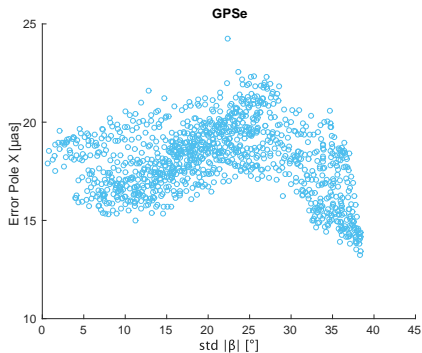
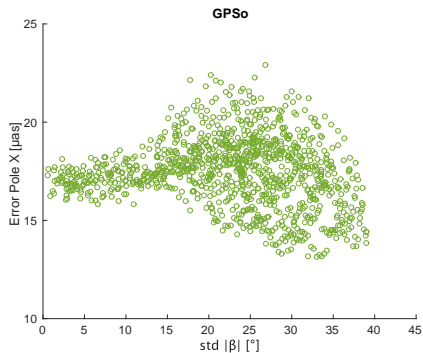
GPS: Two Three-Plane Constellations

Formal errors for ERP estimates: Y component



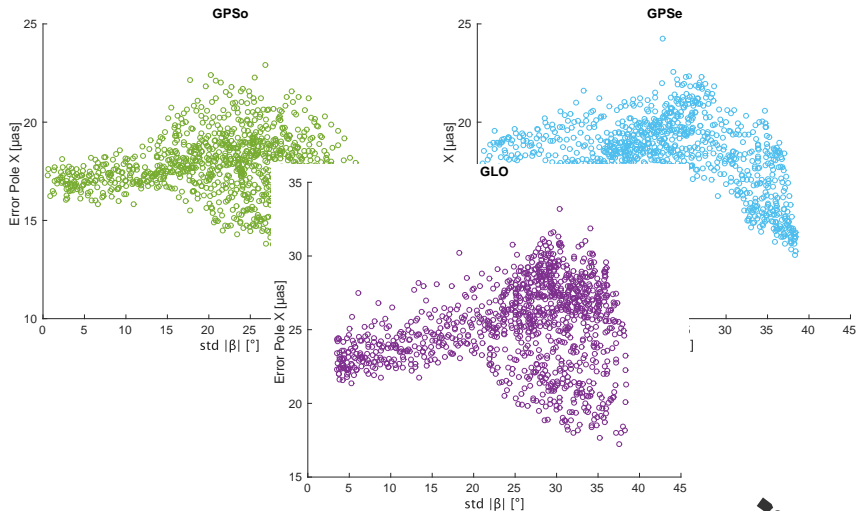
GPS: Two Three-Plane Constellations

Formal errors for ERP estimates: X component



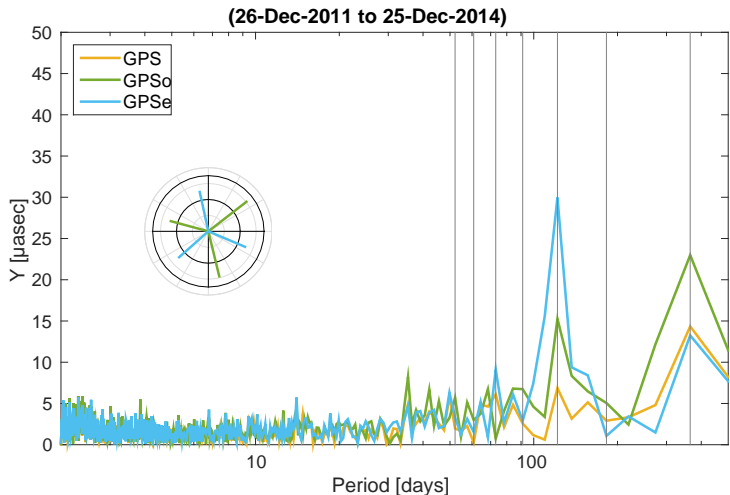
GPS: Two Three-Plane Constellations

Formal errors for ERP estimates: X component



GPS: Two Three-Plane Constellations

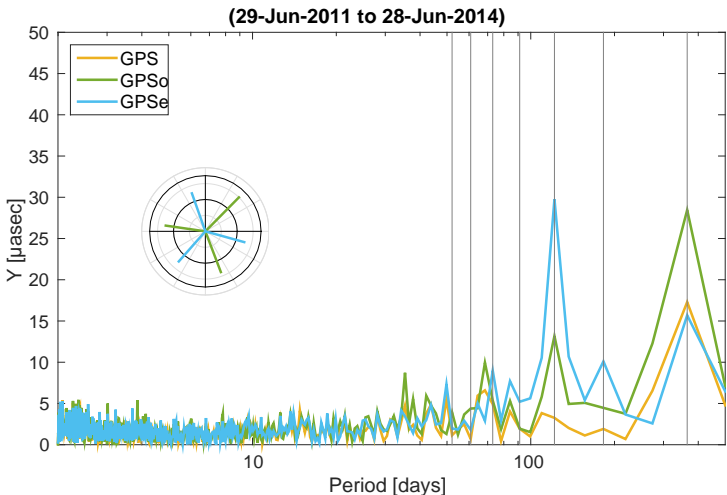
Amplitude spectra from ERP estimates: Y component



Differences w.r.t. IERS C04 series (related to ITRF2008) have been analysed.

GPS: Two Three-Plane Constellations

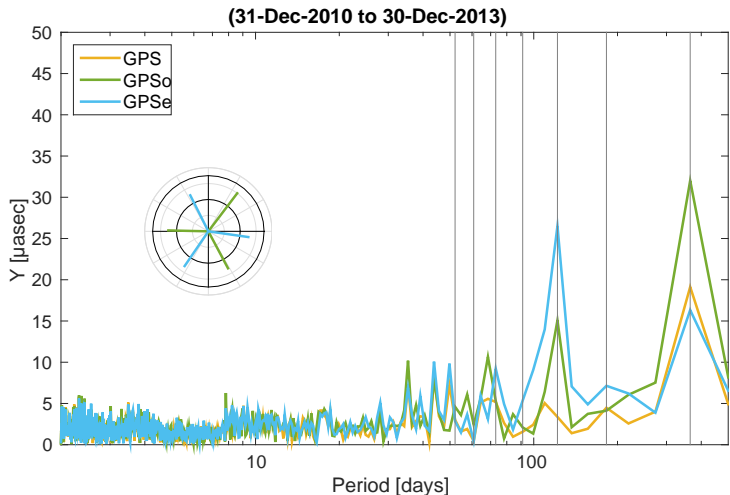
Amplitude spectra from ERP estimates: Y component



Differences w.r.t. IERS C04 series (related to ITRF2008) have been analysed.

GPS: Two Three-Plane Constellations

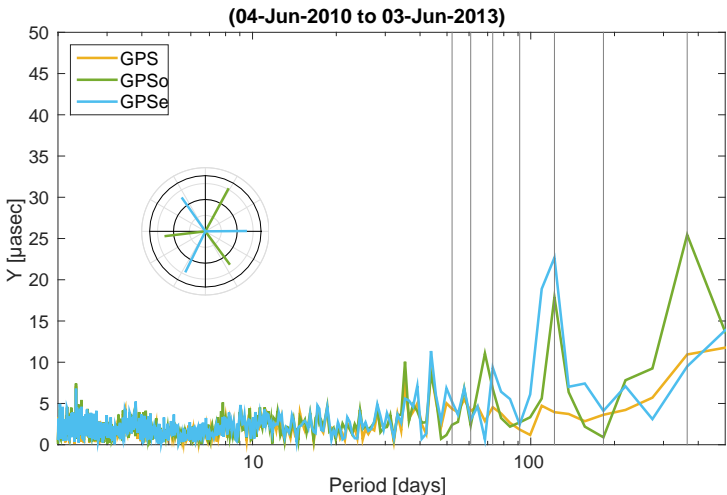
Amplitude spectra from ERP estimates: Y component



Differences w.r.t. IERS C04 series (related to ITRF2008) have been analysed.

GPS: Two Three-Plane Constellations

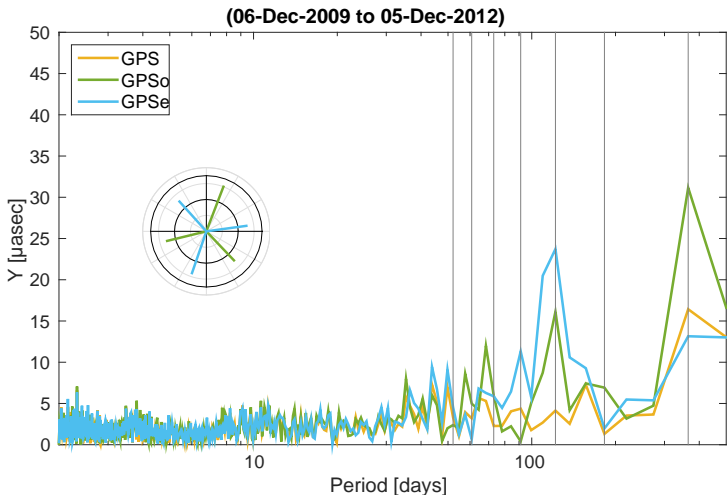
Amplitude spectra from ERP estimates: Y component



Differences w.r.t. IERS C04 series (related to ITRF2008) have been analysed.

GPS: Two Three-Plane Constellations

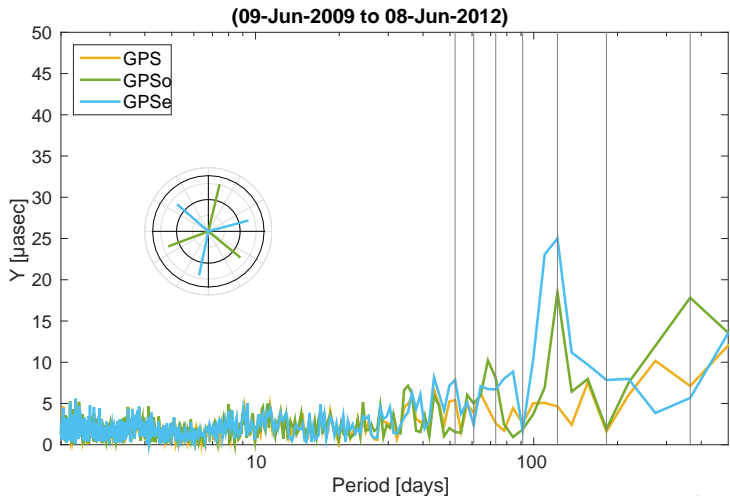
Amplitude spectra from ERP estimates: Y component



Differences w.r.t. IERS C04 series (related to ITRF2008) have been analysed.

GPS: Two Three-Plane Constellations

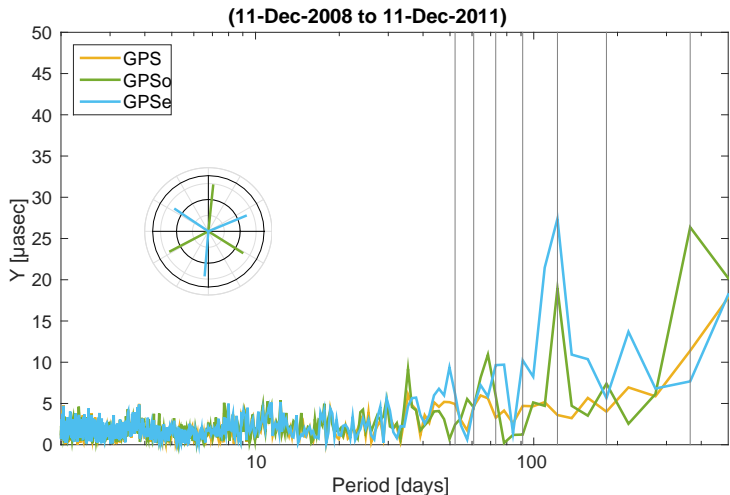
Amplitude spectra from ERP estimates: Y component



Differences w.r.t. IERS C04 series (related to ITRF2008) have been analysed.

GPS: Two Three-Plane Constellations

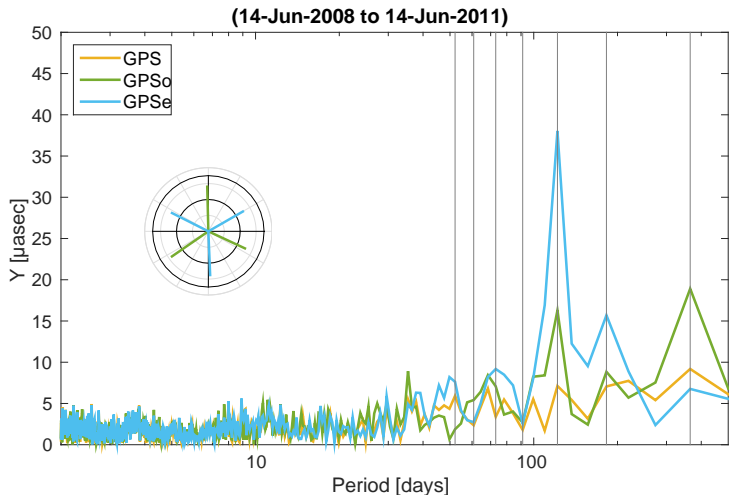
Amplitude spectra from ERP estimates: Y component



Differences w.r.t. IERS C04 series (related to ITRF2008) have been analysed.

GPS: Two Three-Plane Constellations

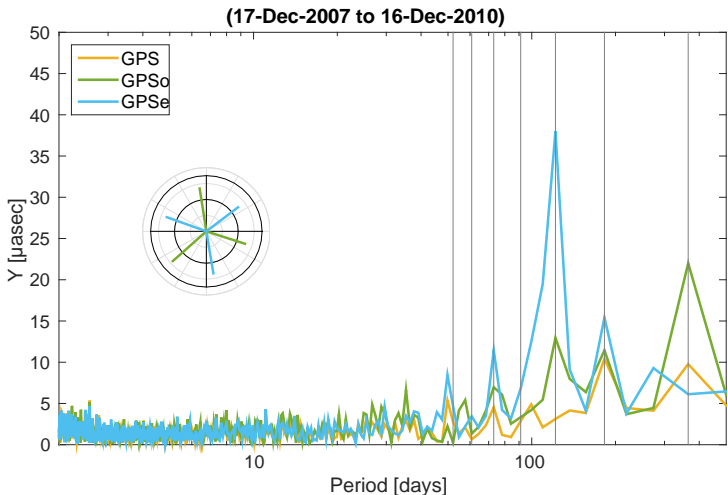
Amplitude spectra from ERP estimates: Y component



Differences w.r.t. IERS C04 series (related to ITRF2008) have been analysed.

GPS: Two Three-Plane Constellations

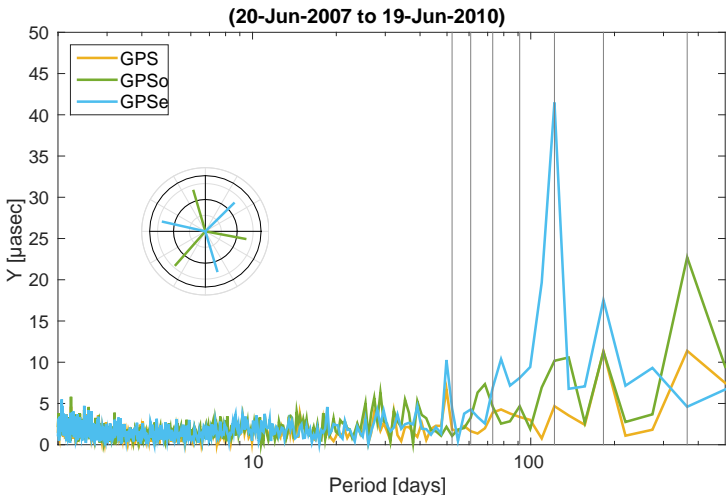
Amplitude spectra from ERP estimates: Y component



Differences w.r.t. IERS C04 series (related to ITRF2008) have been analysed.

GPS: Two Three-Plane Constellations

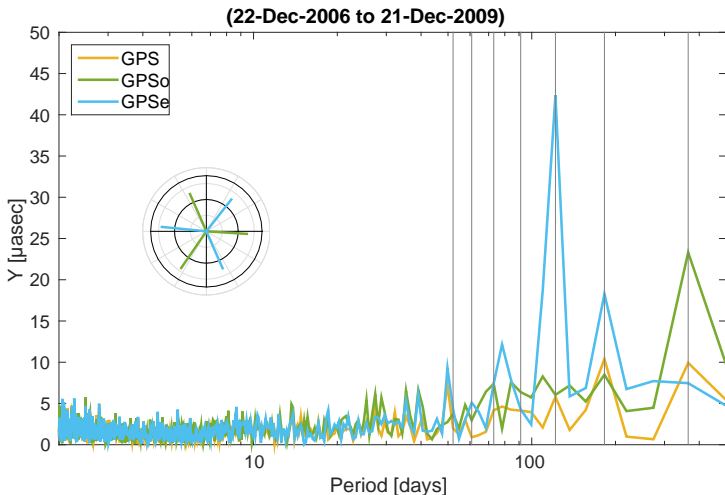
Amplitude spectra from ERP estimates: Y component



Differences w.r.t. IERS C04 series (related to ITRF2008) have been analysed.

GPS: Two Three-Plane Constellations

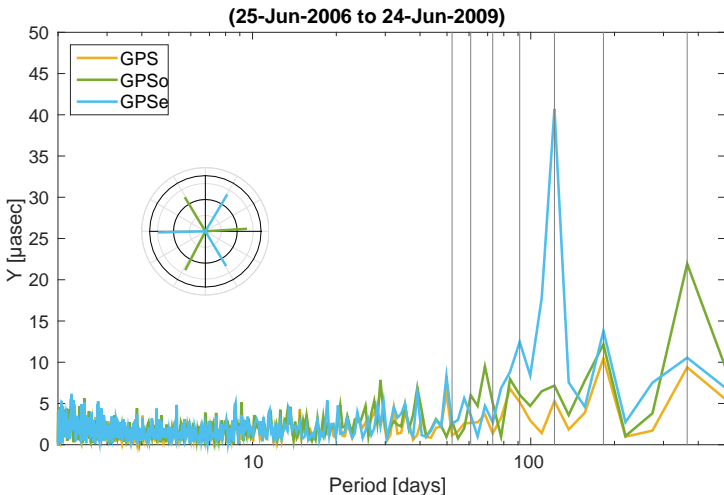
Amplitude spectra from ERP estimates: Y component



Differences w.r.t. IERS C04 series (related to ITRF2008) have been analysed.

GPS: Two Three-Plane Constellations

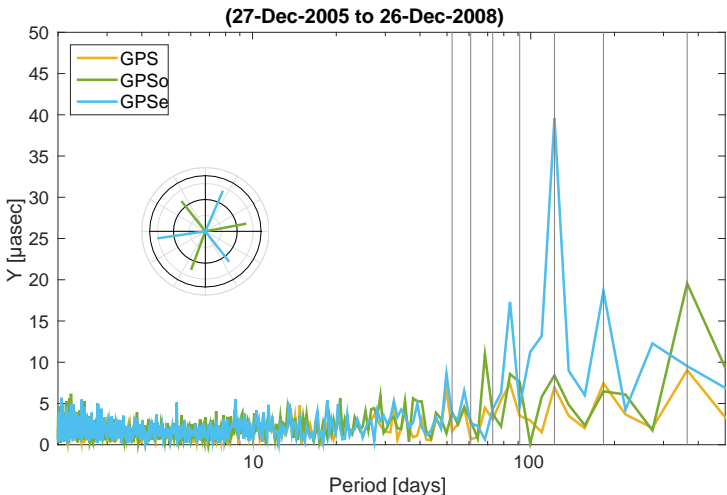
Amplitude spectra from ERP estimates: Y component



Differences w.r.t. IERS C04 series (related to ITRF2008) have been analysed.

GPS: Two Three-Plane Constellations

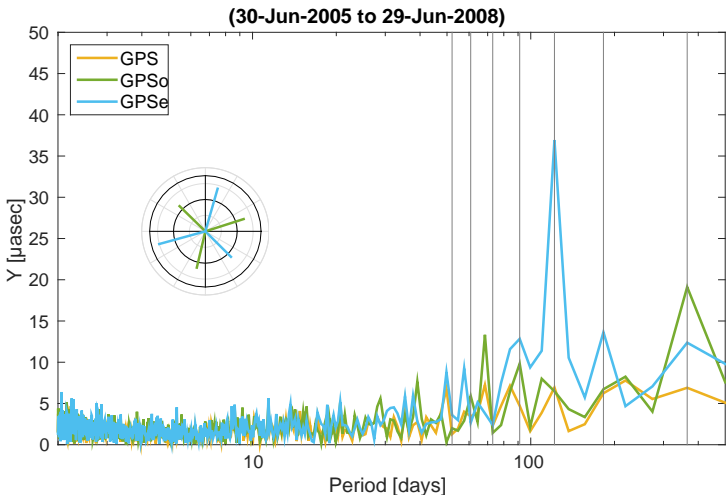
Amplitude spectra from ERP estimates: Y component



Differences w.r.t. IERS C04 series (related to ITRF2008) have been analysed.

GPS: Two Three-Plane Constellations

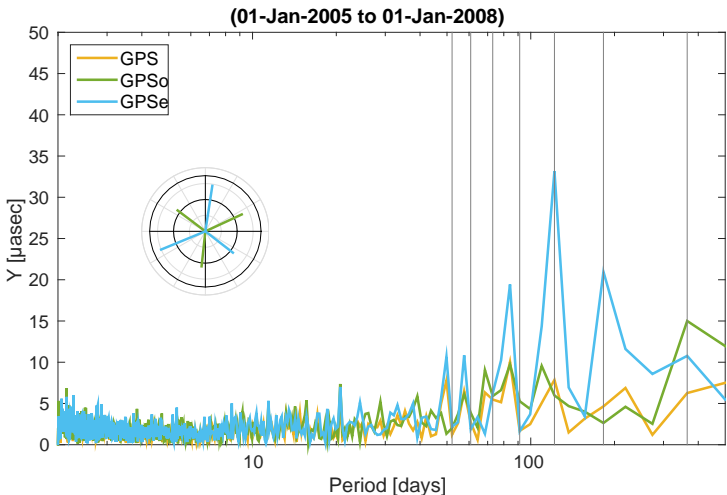
Amplitude spectra from ERP estimates: Y component



Differences w.r.t. IERS C04 series (related to ITRF2008) have been analysed.

GPS: Two Three-Plane Constellations

Amplitude spectra from ERP estimates: Y component



Differences w.r.t. IERS C04 series (related to ITRF2008) have been analysed.

Summary and Conclusion

- The setup of satellite-, plane-, or GNSS-specific ERP- and/or GCC-parameters was implemented.
 - It is enabled for internal purposes in the operational solution since May 2015 and the most recent reprocessing (see Poster by Sušnik et al.).
 - The results from a GNSS-specific setup on the NEQ-level are equivalent to independent GNSS-specific solutions.

Summary and Conclusion

- The setup of satellite-, plane-, or GNSS-specific ERP- and/or GCC-parameters was implemented.
- There is almost no contribution from GLONASS to a combined GPS+GLONASS GCC series (Z-component).
 - Meindl et al (2013): due to the inclination of GLONASS satellites (64°) the Sun may be almost perpendicular above the orbital plane, which results in a direct correlation with dynamic orbit parameters.

Summary and Conclusion

- The setup of satellite-, plane-, or GNSS-specific ERP- and/or GCC-parameters was implemented.
- There is almost no contribution from GLONASS to a combined GPS+GLONASS GCC series (Z-component).
- The GLONASS contribution to the ERPs is mainly limited by the three-plane constellation.
 - The ERP results from the GLONASS constellation are comparable to solutions with a synthetic three-plane GPS constellation.
 - The geometric effect changes in time due to the regression of the nodes of the satellite's orbital planes.

Summary and Conclusion

- The setup of satellite-, plane-, or GNSS-specific ERP- and/or GCC-parameters was implemented.
- There is almost no contribution from GLONASS to a combined GPS+GLONASS GCC series (Z-component).
- The GLONASS contribution to the ERPs is mainly limited by the three-plane constellation.
- Similar limitations may be expected for Galileo and the MEO-constellation of BeiDou.
- With a full multi-GNSS analysis the constellation effect should be heavily reduced, ideally eliminated.

THANK YOU

for your attention



Publications of the satellite geodesy research group:

<http://www.bernese.unibe.ch/publist>