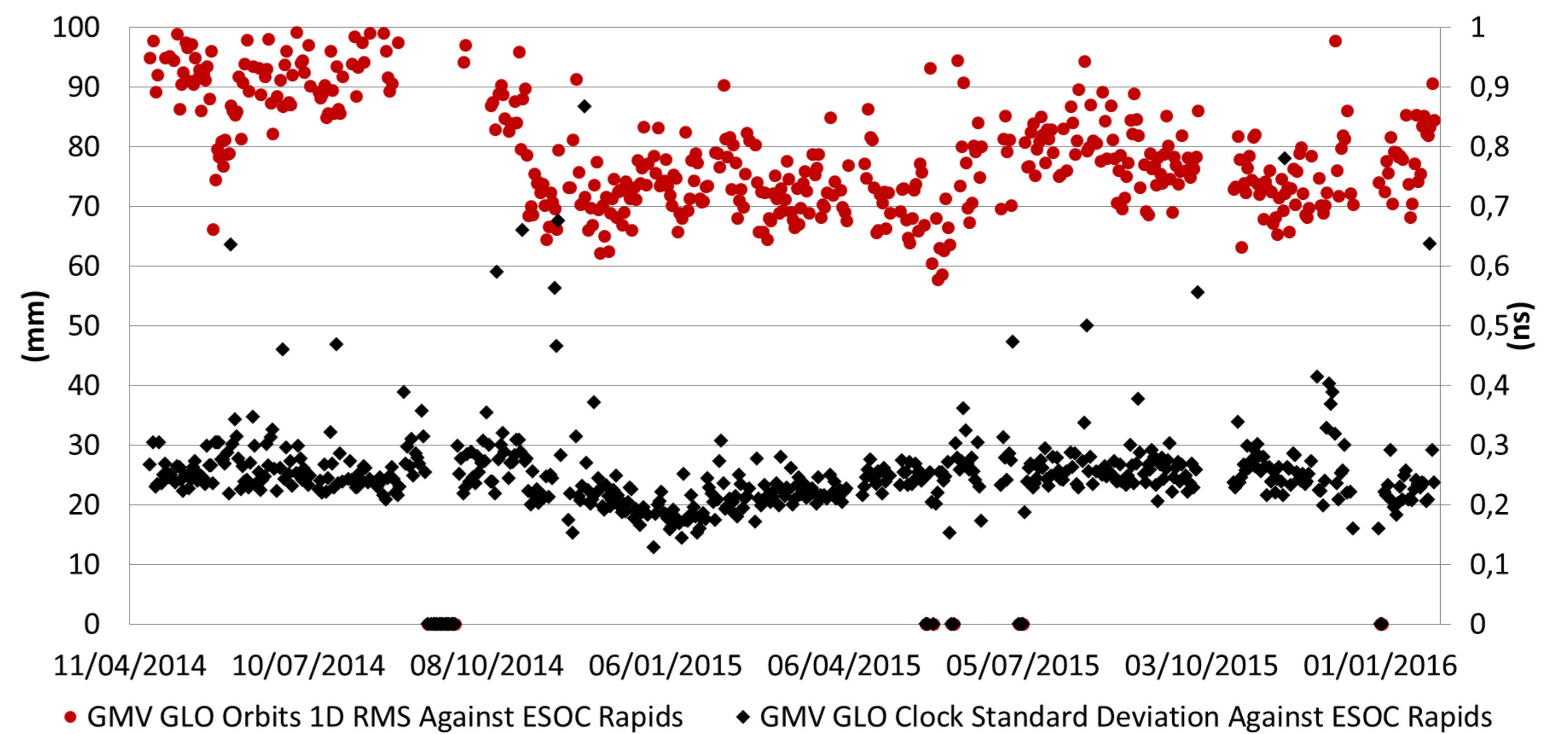
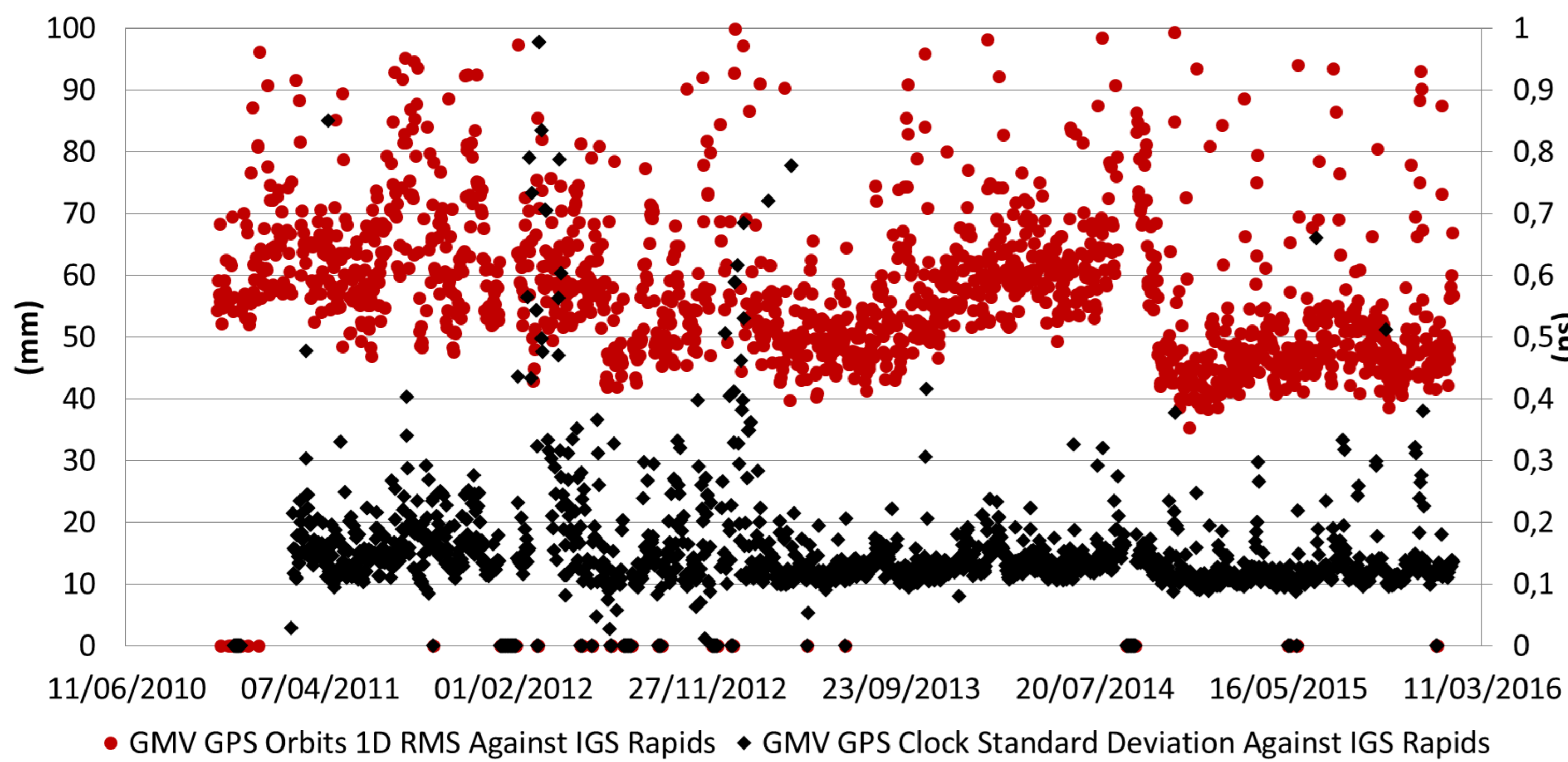


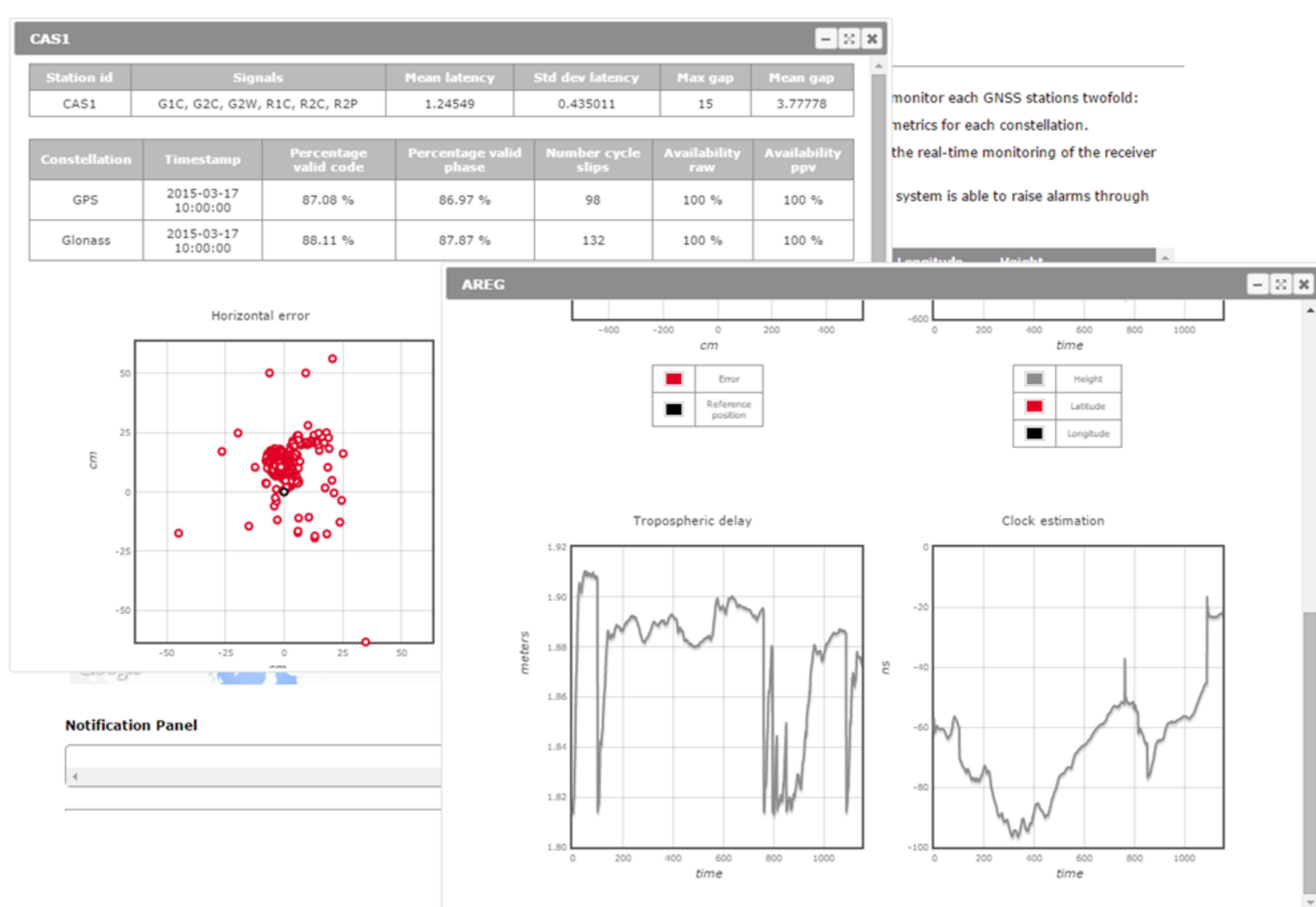
magicGNSS' CONTRIBUTION TO REAL TIME IGS SERVICE

HISTORICAL PERFORMANCES



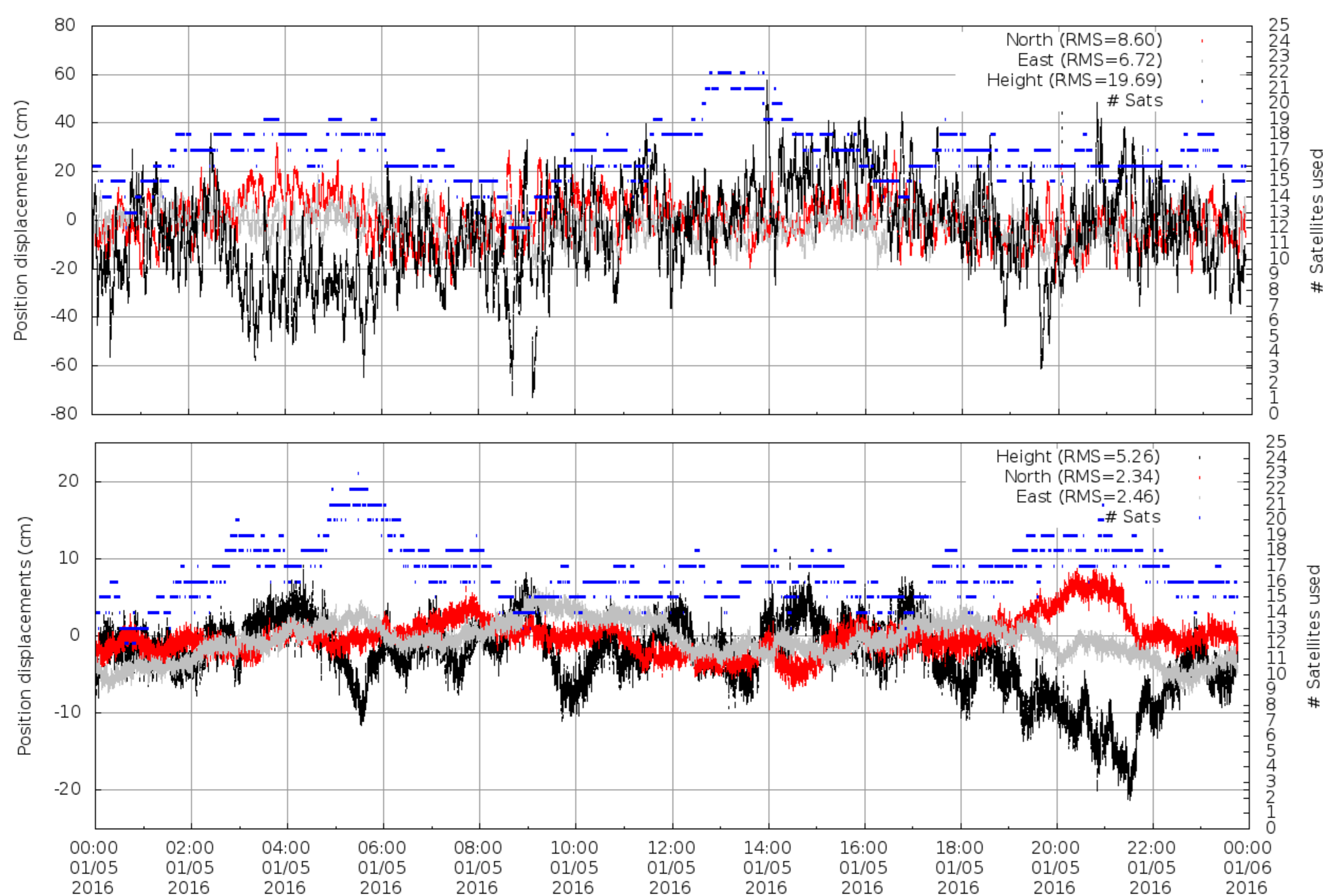
PROCESS ROBUSTNESS

- Server redundancy
- Product quality checks
- Notifications handling (NANUs, NAGUs, outages)
- Online configuration (GSS changes)
- Storage of process indicators
- **Quality monitoring via RT PPP Monitoring Service**



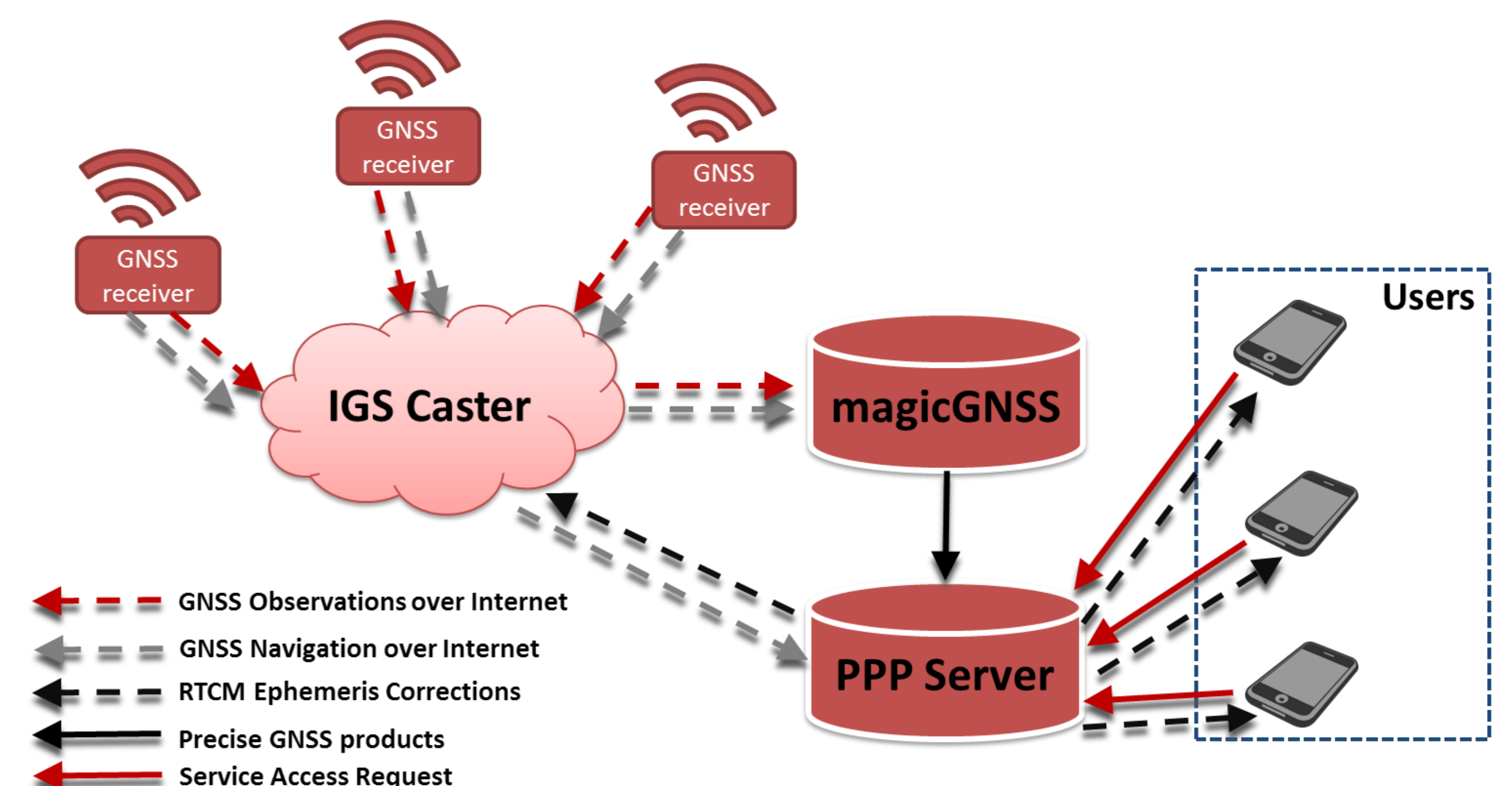
REAL TIME PPP PERFORMANCES

- End performances evaluated at user level both for:
 - **Double-frequency:** 3cm HRMS, 6cm VRMS
 - **Single-frequency:** 15cm HRMS, 25cm VRMS



REFERENCE PRODUCTS

- GMV's contribution to Real Time IGS
- **GPS + GLONASS** combined process
- Based on 80 IGS RTCM station network
- Orbit update every 15 minutes
- Clock estimation @ 1-sec rate
- RTCM ephemeris corrections
- Real-time Orbit and Clock estimations computed with *magicGNSS* engine



MULTI-GNSS SOLUTION

- Multi-GNSS solution based on RTCM MGEX data processing
- **GPS + GLONASS + Galileo + BeiDou + QZSS** combined process
- Sequential constellation processing approach for computation time reduction
- Usage of **draft RTCM messages** for BeiDou ephemeris and Galileo ephemeris corrections

RTCM messages availability

	GPS	GLONASS	Galileo	BeiDou	QZSS
Observations (MSM)	YES	YES	YES	YES	YES
Ephemeris	YES	YES	YES	YES	YES
Ephemeris corrections	YES	YES	YES	NO	NO

