

IGS 2nd Reprocessing at GFZ

Zhiguo Deng, Gerd Gendt, Tilo Schöne, Thomas Nischan and Mathias Fritsche

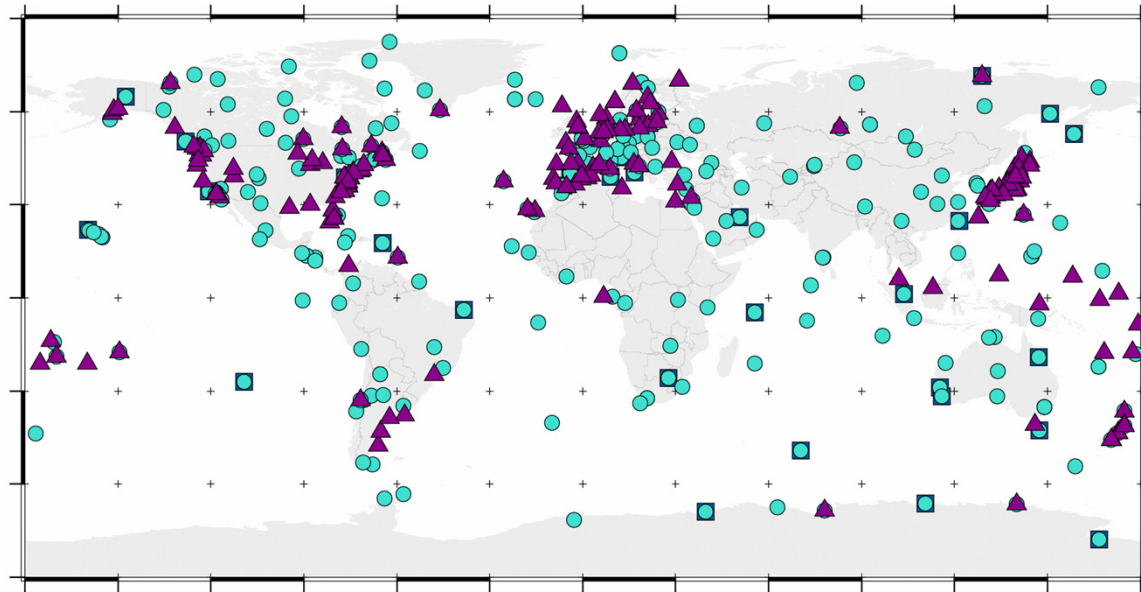
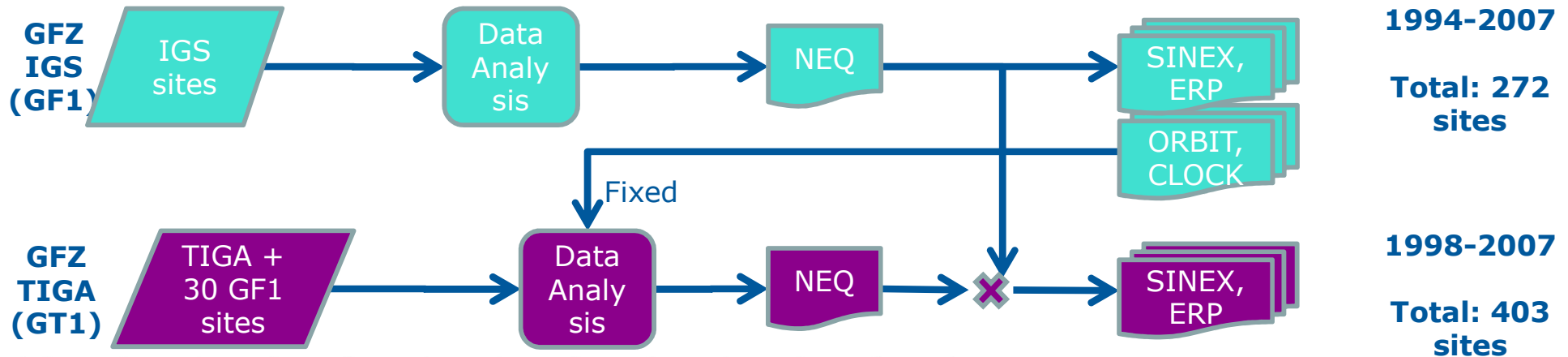
Helmholtz-Zentrum Potsdam
Deutsches GeoForschungsZentrum (GFZ)

deng@gfz-potsdam.de

Content

- Reprocessing activity at GFZ
- Two solutions from GFZ: GF2 & GT2
- Orbit combination 2000.0~2008.0
- Validation of GF2 & GT2
- Summary

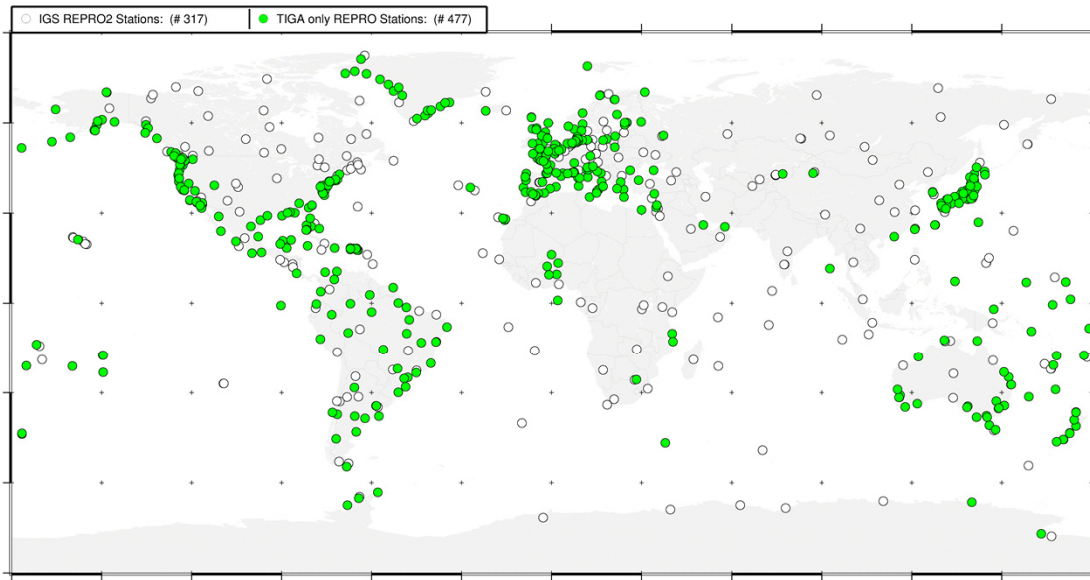
GFZ contribution to IGS Repro1



(Uhlemann et al. 2010, IGS workshop)

Two solutions: GF1 & GT1

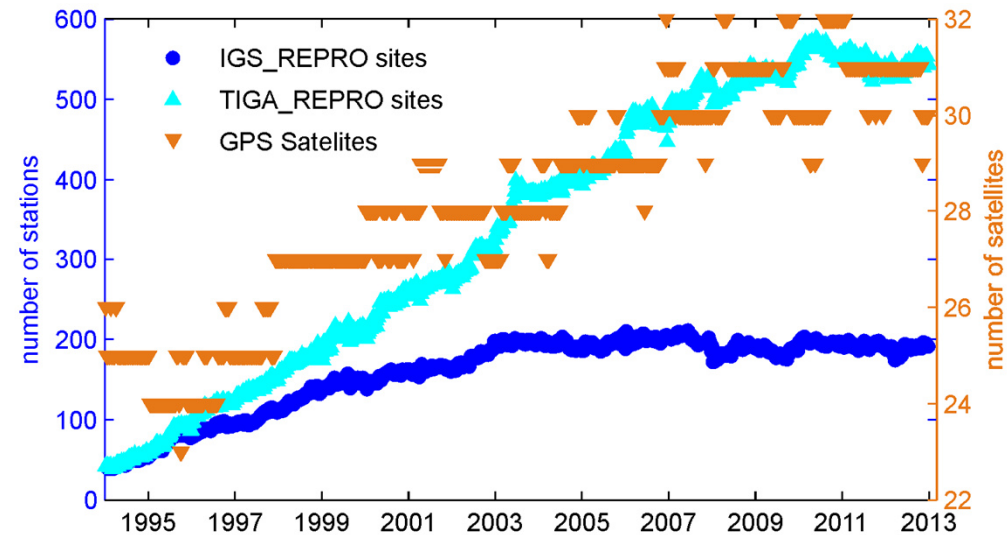
GFZ contribution to IGS Repro2



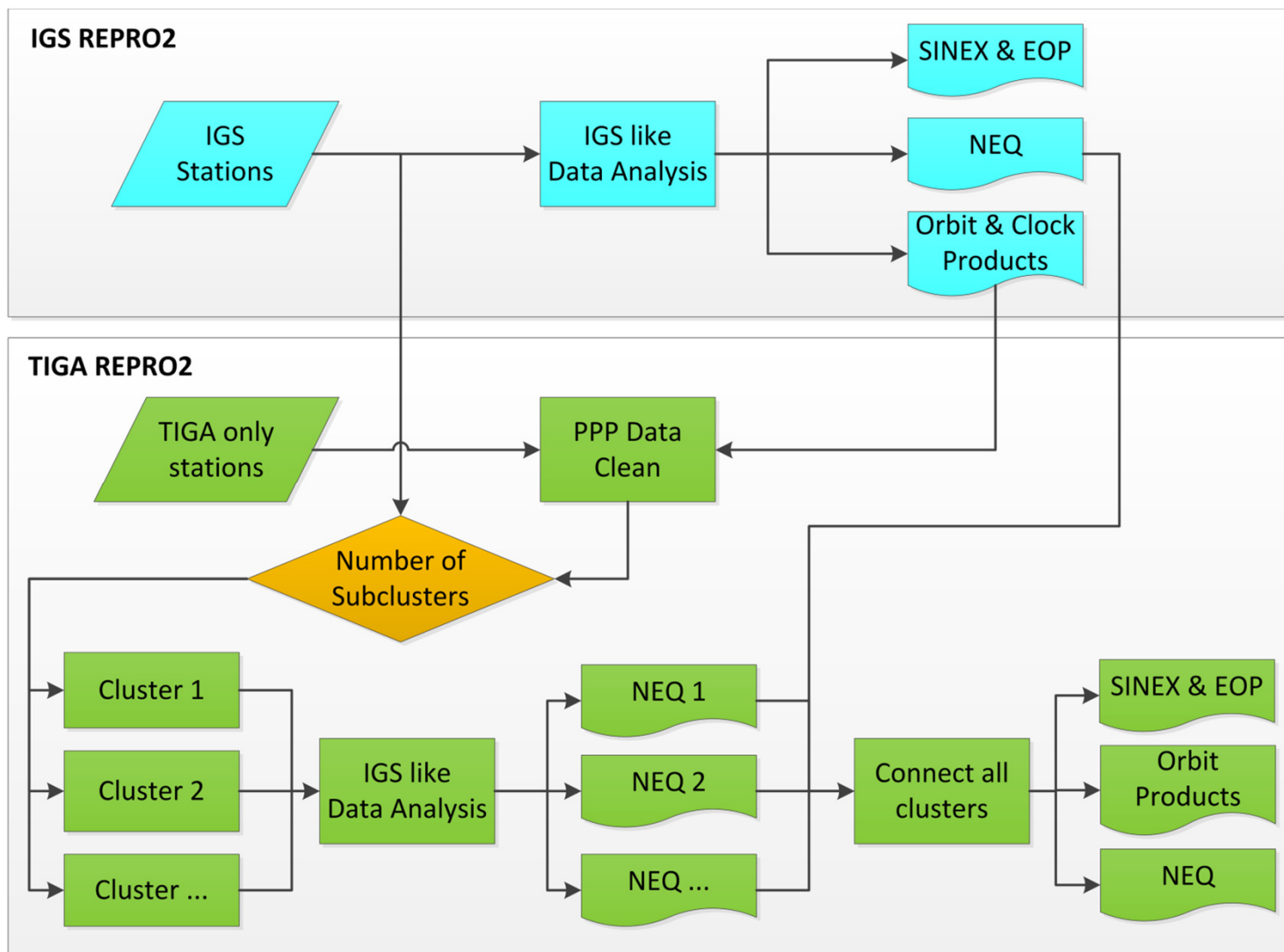
- **Products**

GF2: 15 min. GPS SP3, 5 min. clk, daily
SNX & ERP
GT2: 15 min. GPS SP3 & daily SNX

- **Two solutions GF2 & GT2**
GF2: 317 stations (white dots)
GT2: 794 stations (white+green dots)



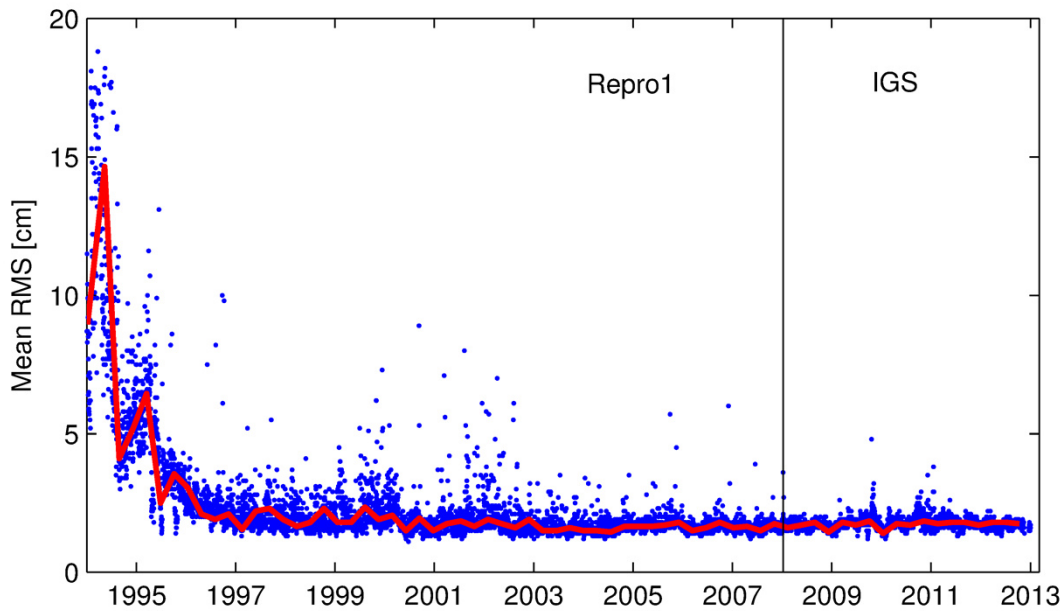
Processing Schemes



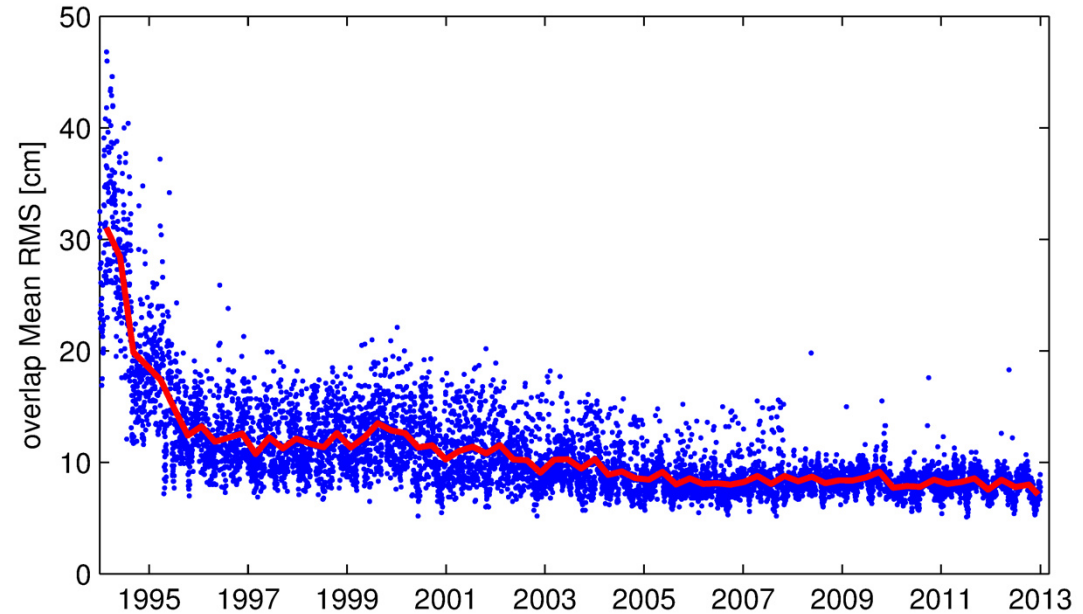
GF2 Products

GT2 Products

Repro2 orbit quality

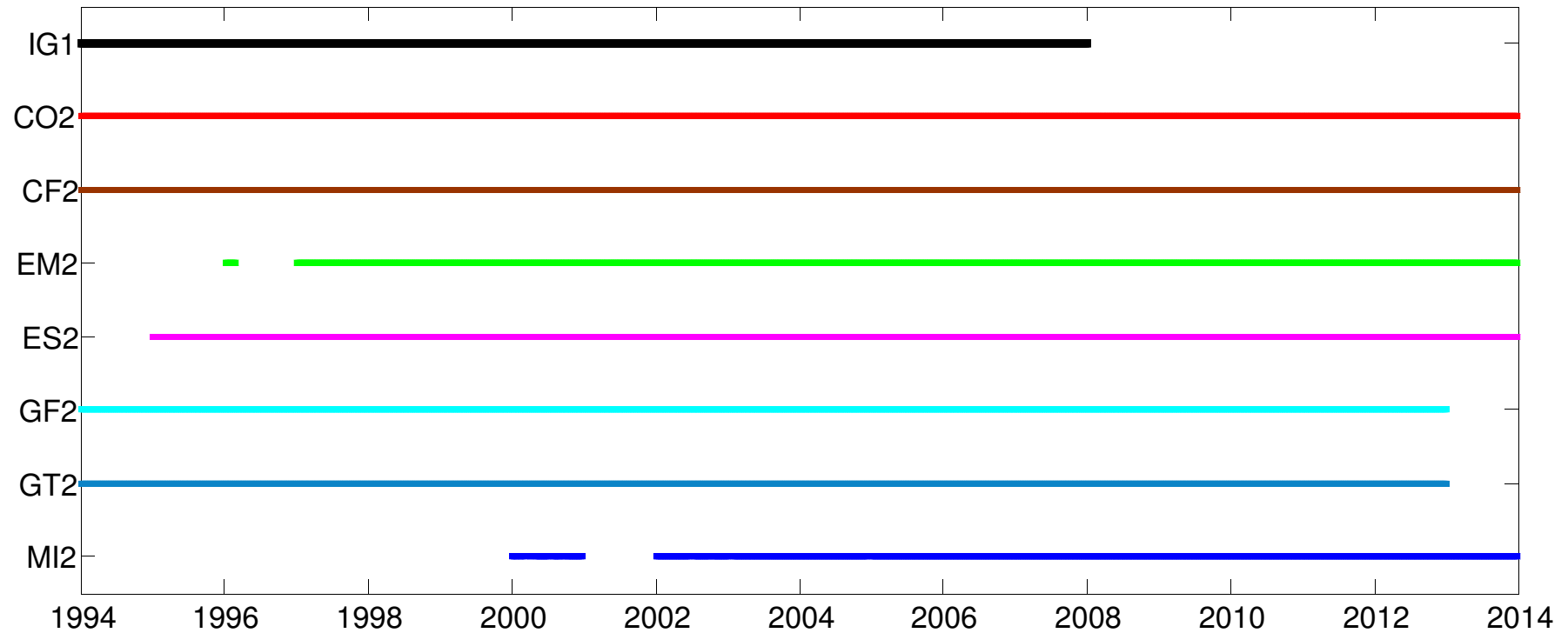


Mean RMS of transformed GF2 orbits
w.r.t. the REPRO1 / IGS Final orbits



Mean RMS values of GF2 orbit over-
laps (4 hours)

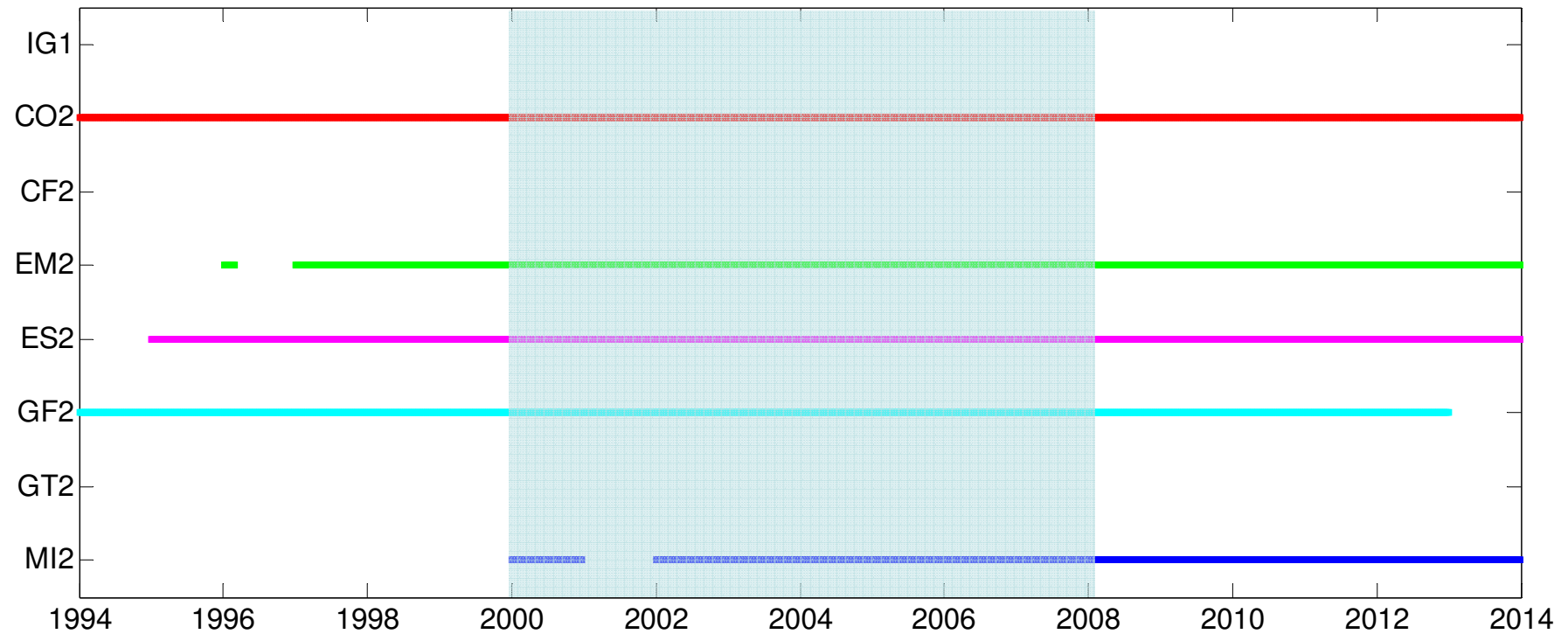
Repro2 products availability



Statuts: June 04 2014

Repro2 products availability

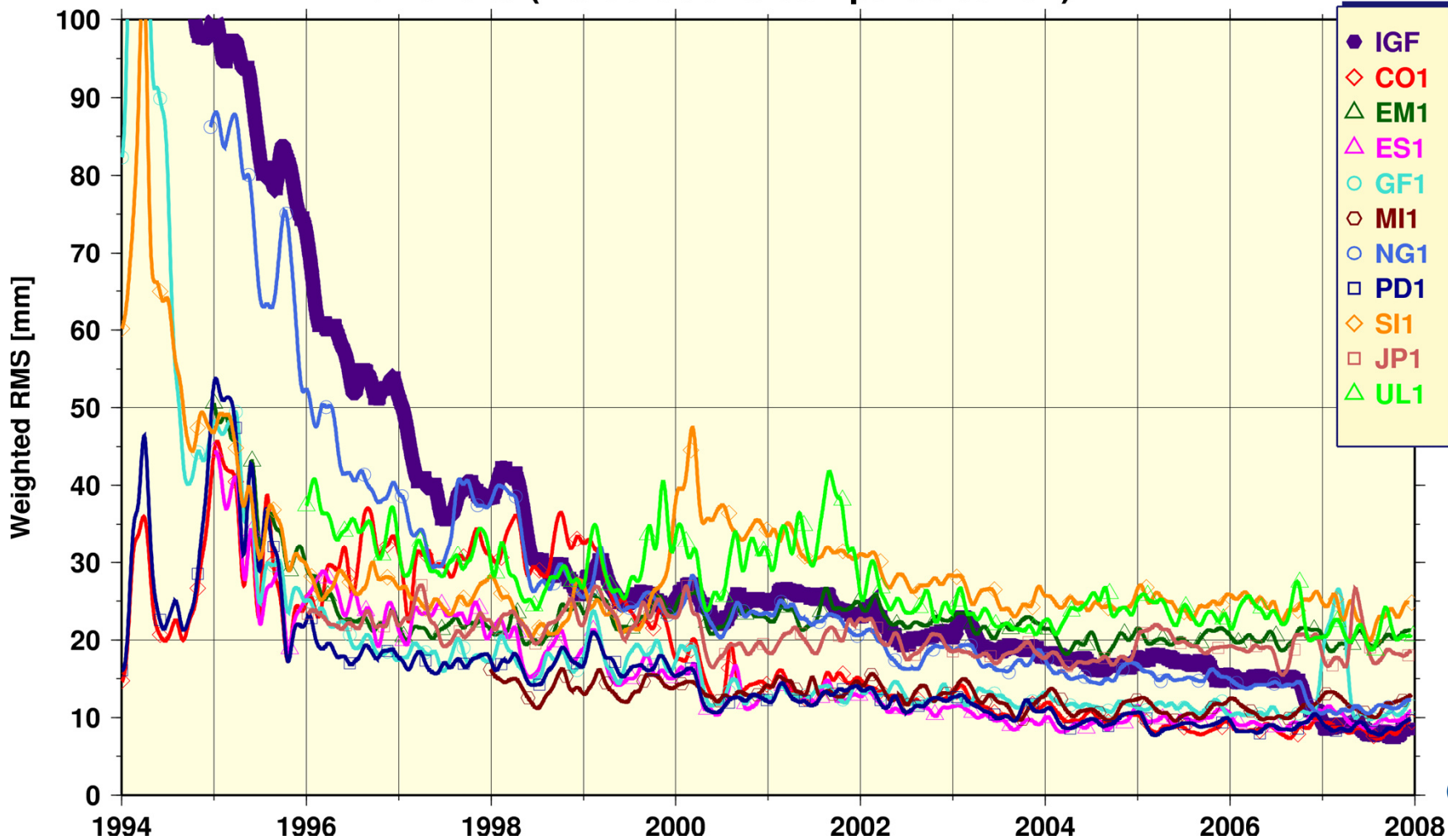
Orbit combination: GFZ_COMB2



Statuts: June 04 2014

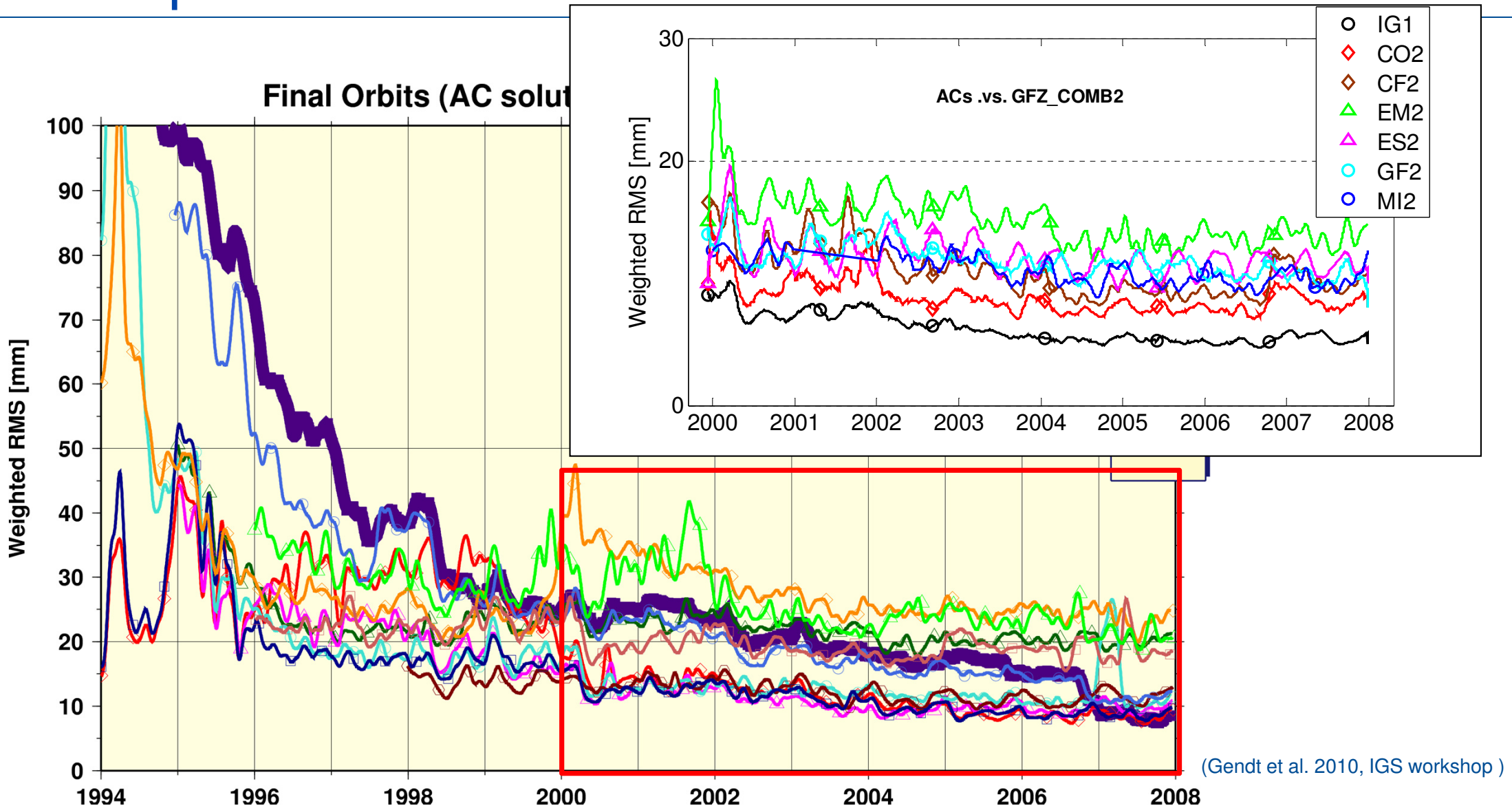
Repro2 orbit validation

Final Orbits (AC solutions compared to IG1)



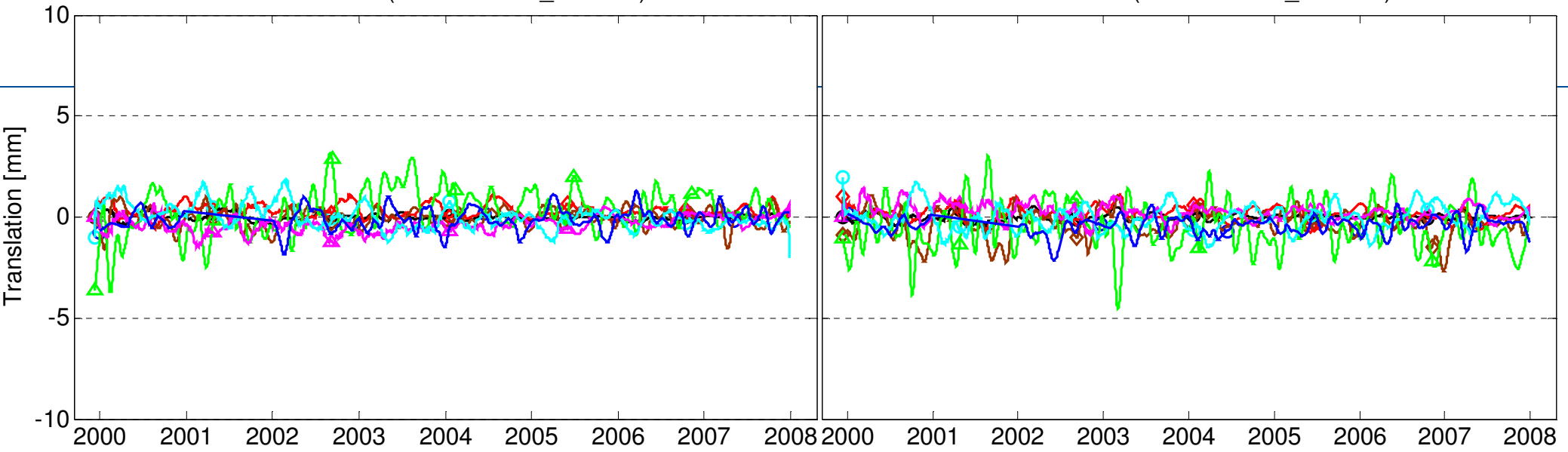
(Gendt et al. 2010, IGS workshop)

Repro2 orbit validation

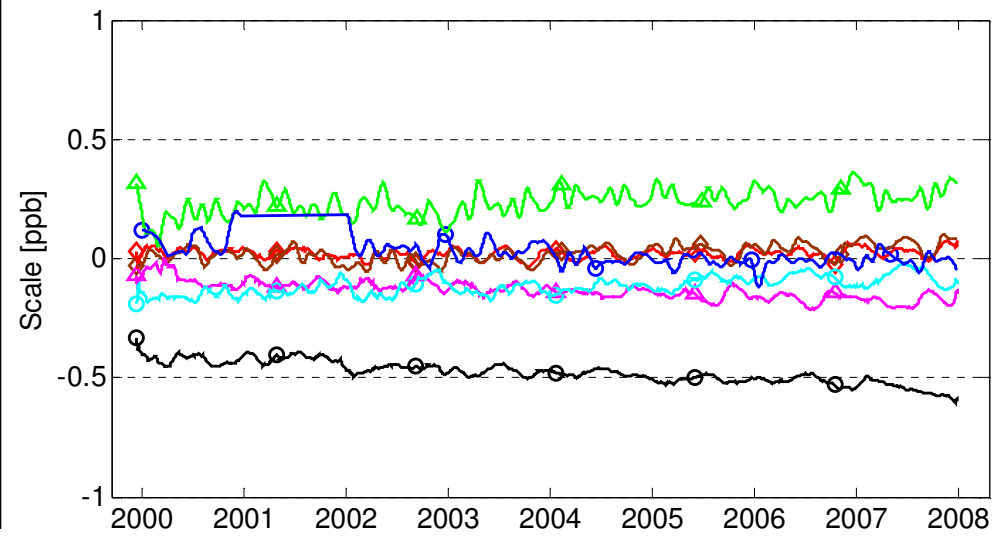
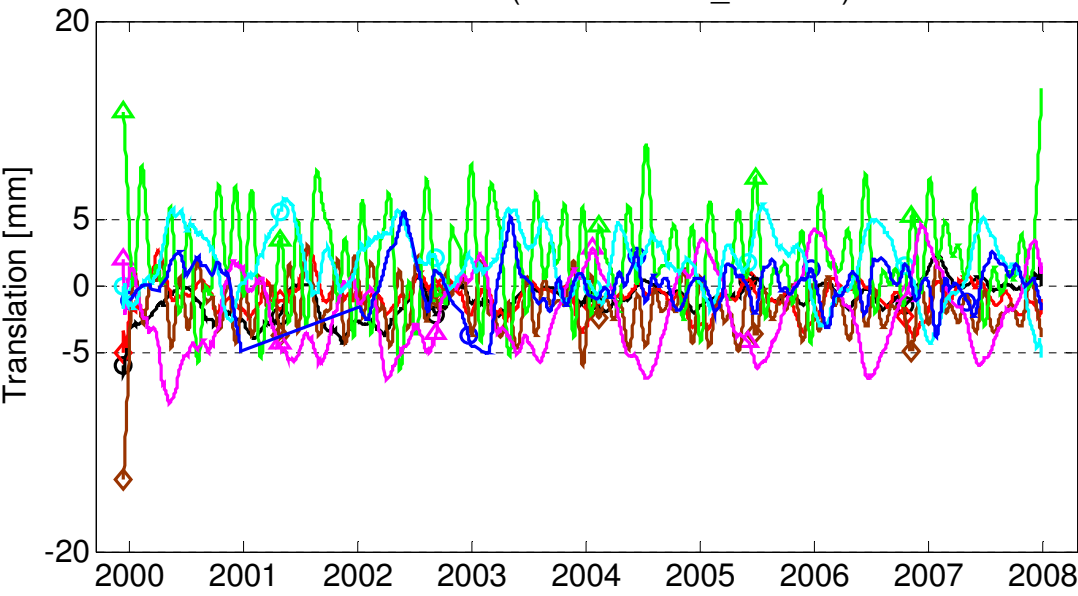


X Translation (ACs .vs. GFZ_COMB2)

Y Translation (ACs .vs. GFZ_COMB2)

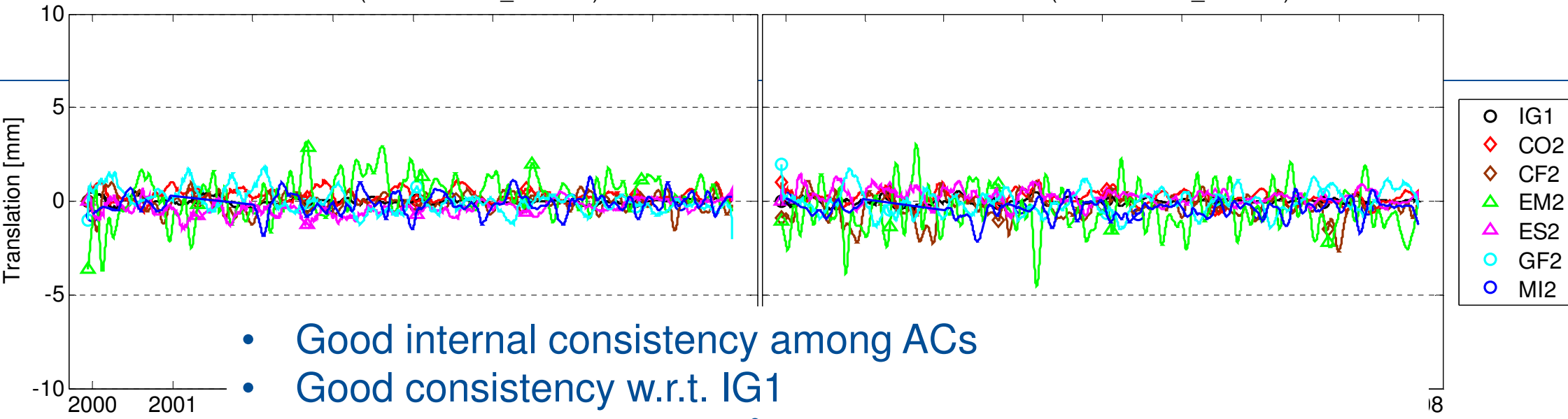


Z Translation (ACs .vs. GFZ_COMB2)

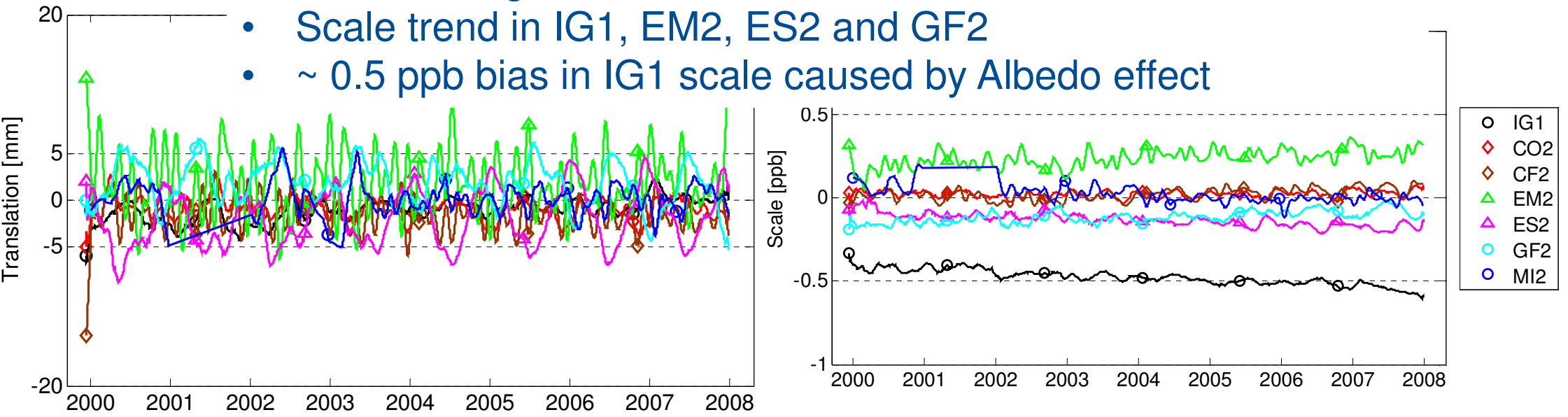


X Translation (ACs .vs. GFZ_COMB2)

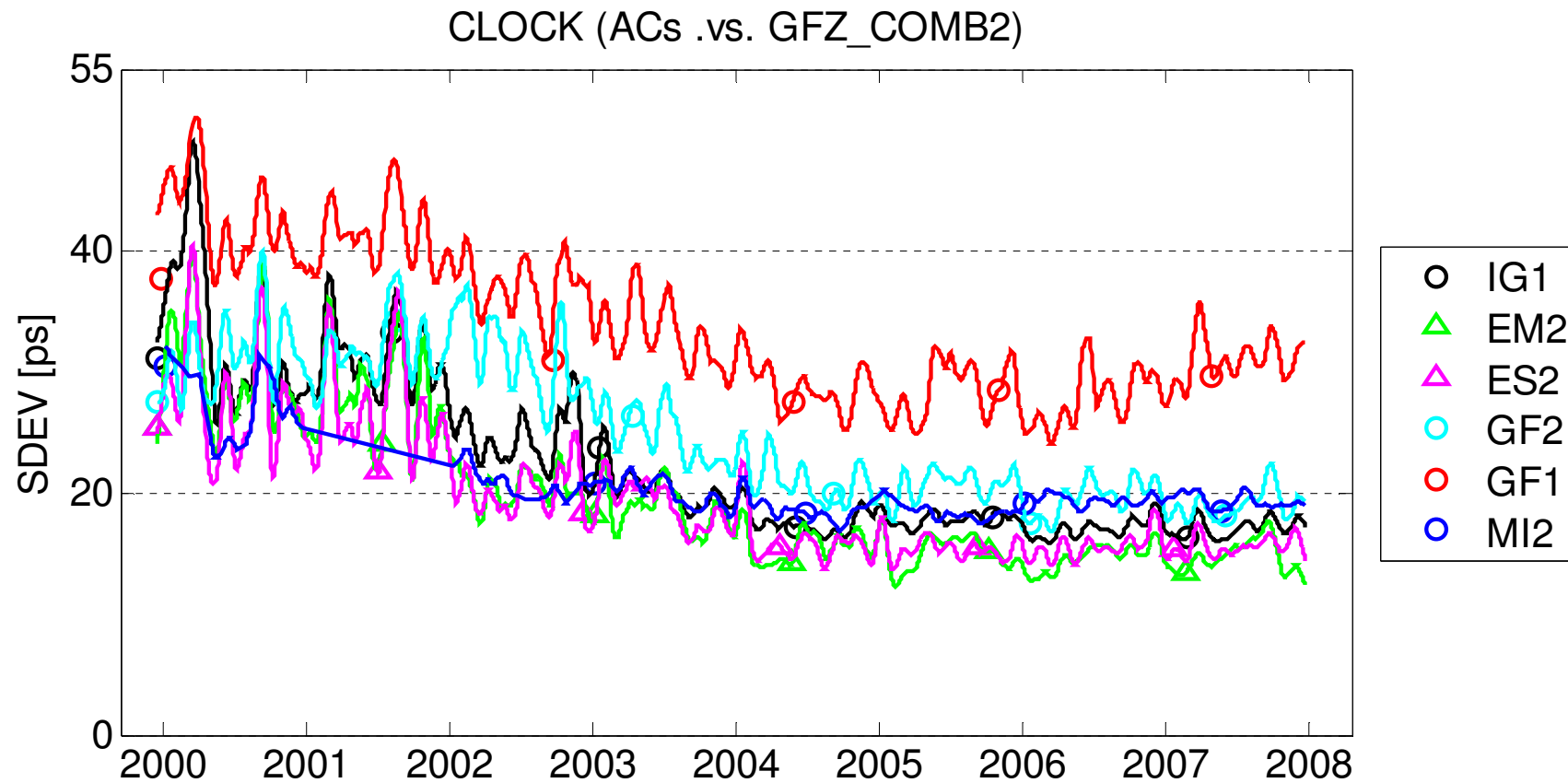
Y Translation (ACs .vs. GFZ_COMB2)



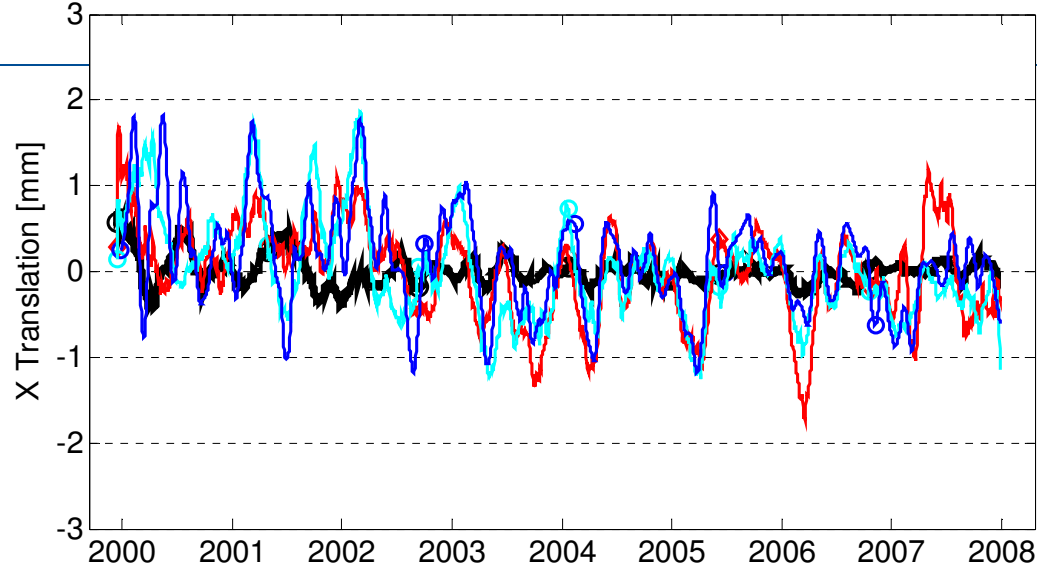
- Good internal consistency among ACs
- Good consistency w.r.t. IG1
- Seasonal signal in Z, 180° shift between MI2, GF2 & ES2
- Scale trend in IG1, EM2, ES2 and GF2
- ~ 0.5 ppb bias in IG1 scale caused by Albedo effect



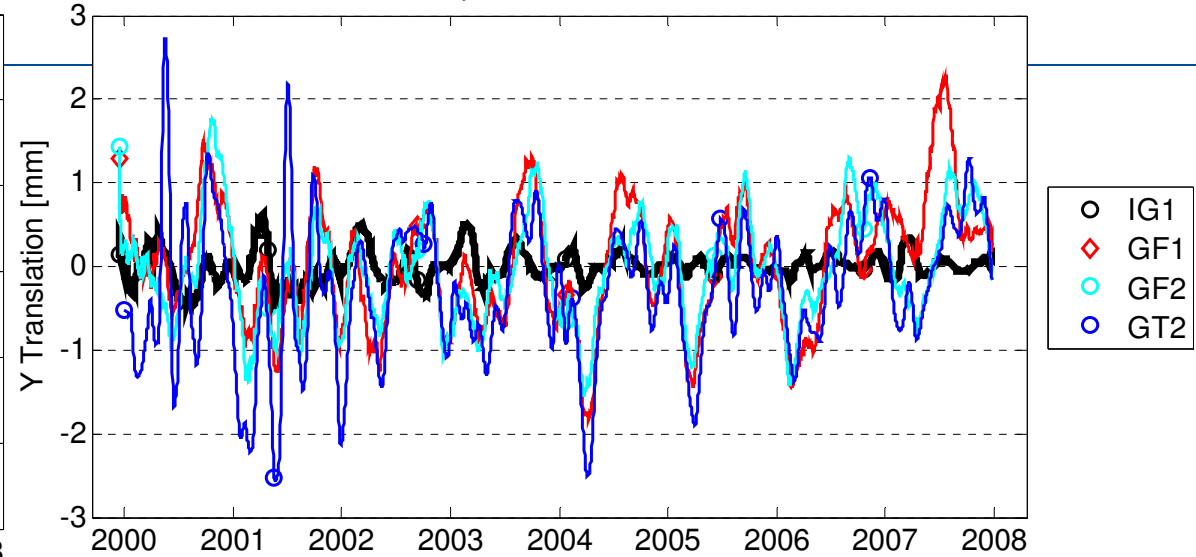
Repro2 clock validation



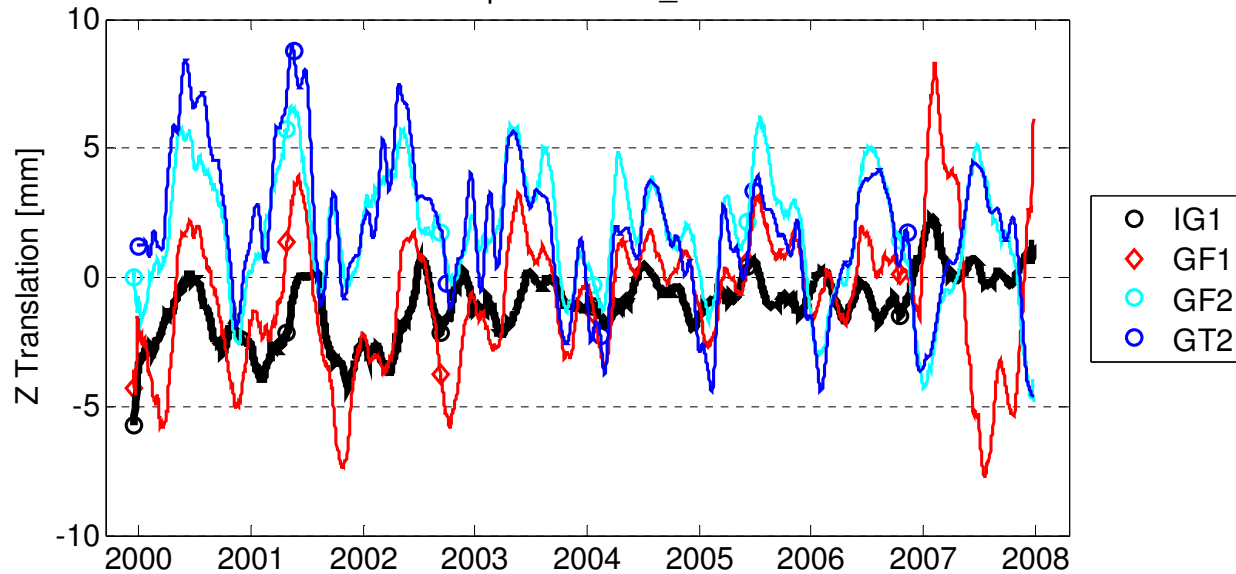
GFZ repro .vs. GFZ_COMB2



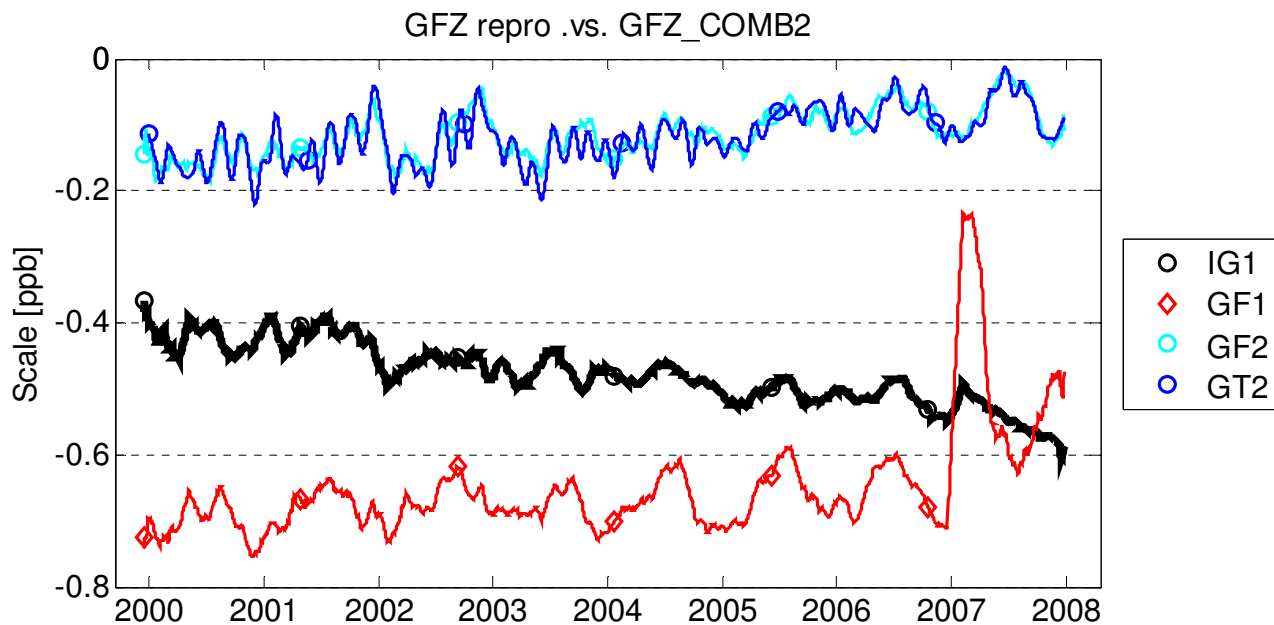
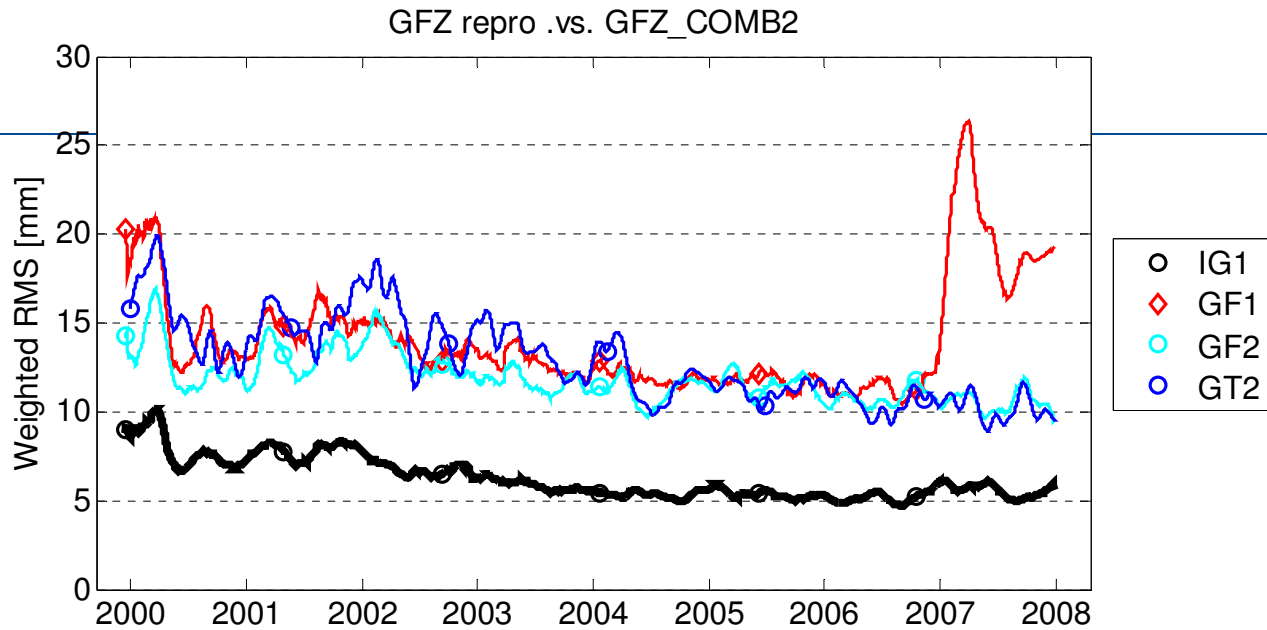
GFZ repro .vs. GFZ_COMB2



GFZ repro .vs. GFZ_COMB2



- GF2>2: same software and processing, different network,
- Significant annual signal in translations of GFZ repro. solutions



- GF2 and GT2 have significant improvement compared with GF1,
- Slight scale trend??

Conclusions

- Two GFZ product sets available at CDDIS (named gf2 & gt2)
- Products are aligned to coordinate and transformation (IGb08)
- Significant improvement in quality and homogeneity of delivered products w.r.t. GF1
- GFZ_COMB2 test shows good internal consistency among ACs
- Seasonal effects in translation Z, especially GF2, ES2 and IG1

Thank you for your attention