

Figure 26. 1997 correlation coefficients between AC X/Y rotations and AC PM differences in y/x with respect to IGR/IGS.

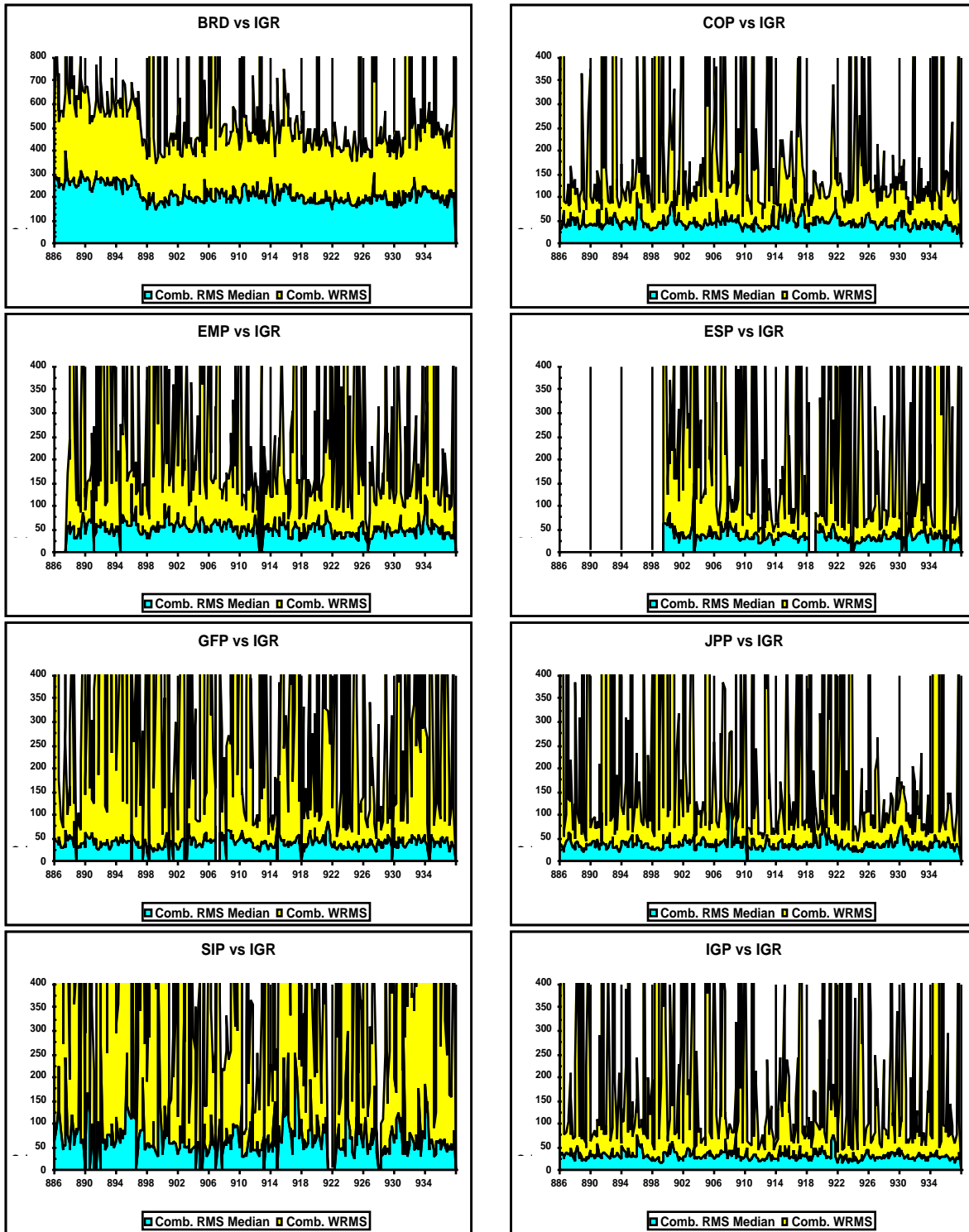


Figure 27. 1997 Prediction Daily orbit position RMS

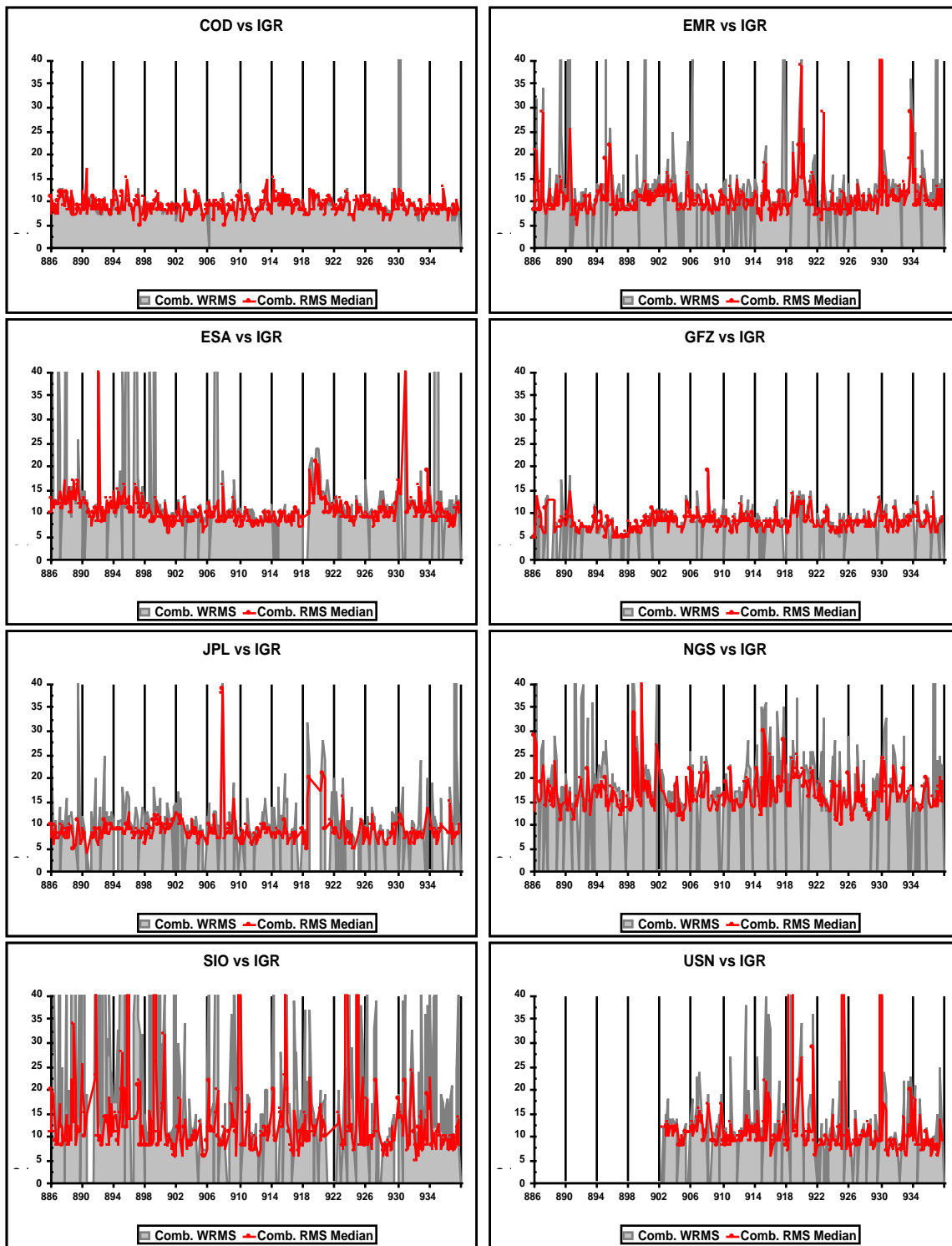


Figure 28. 1997 Rapid Daily orbit position RMS

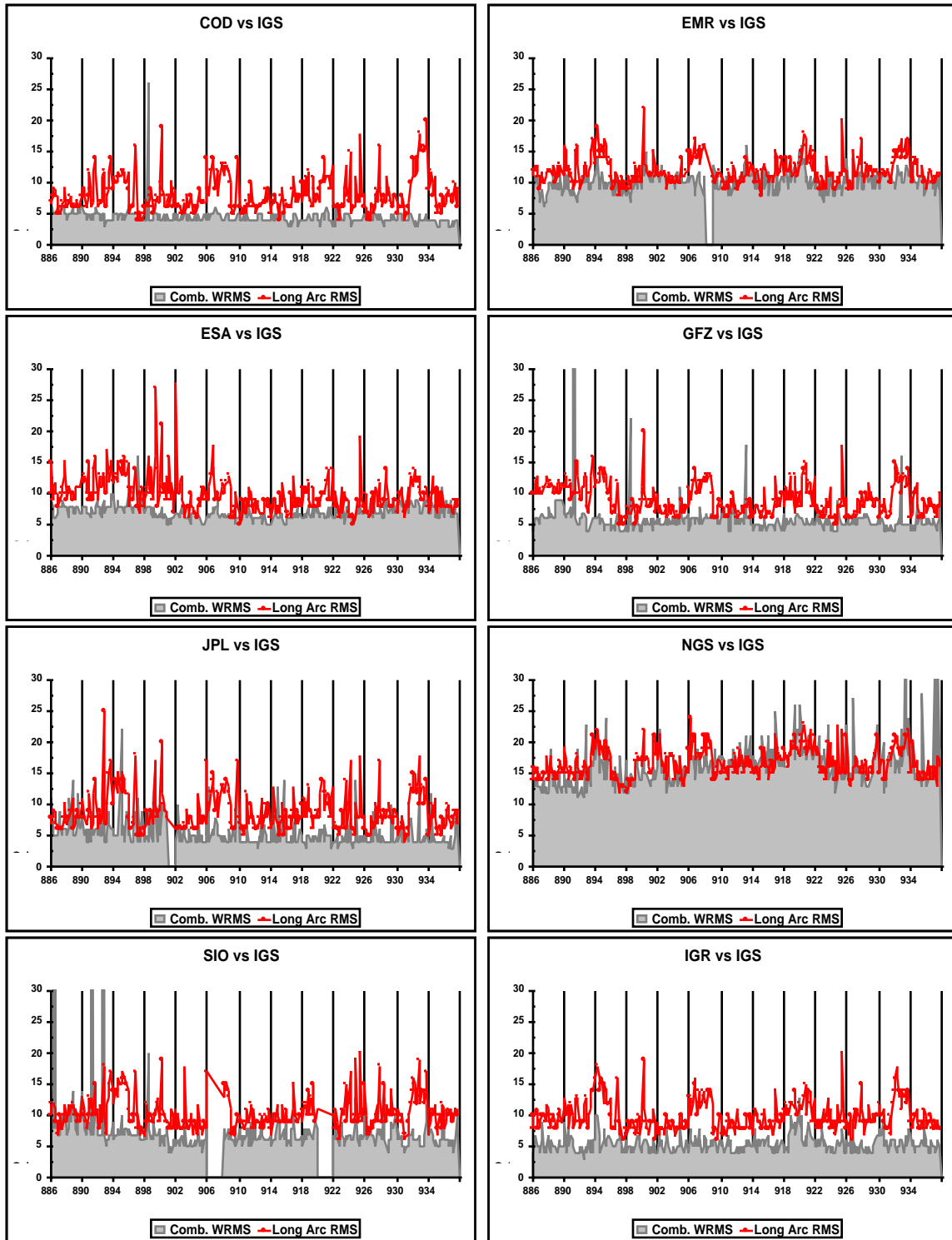


Figure 29. 1997 Final Daily orbit position RMS

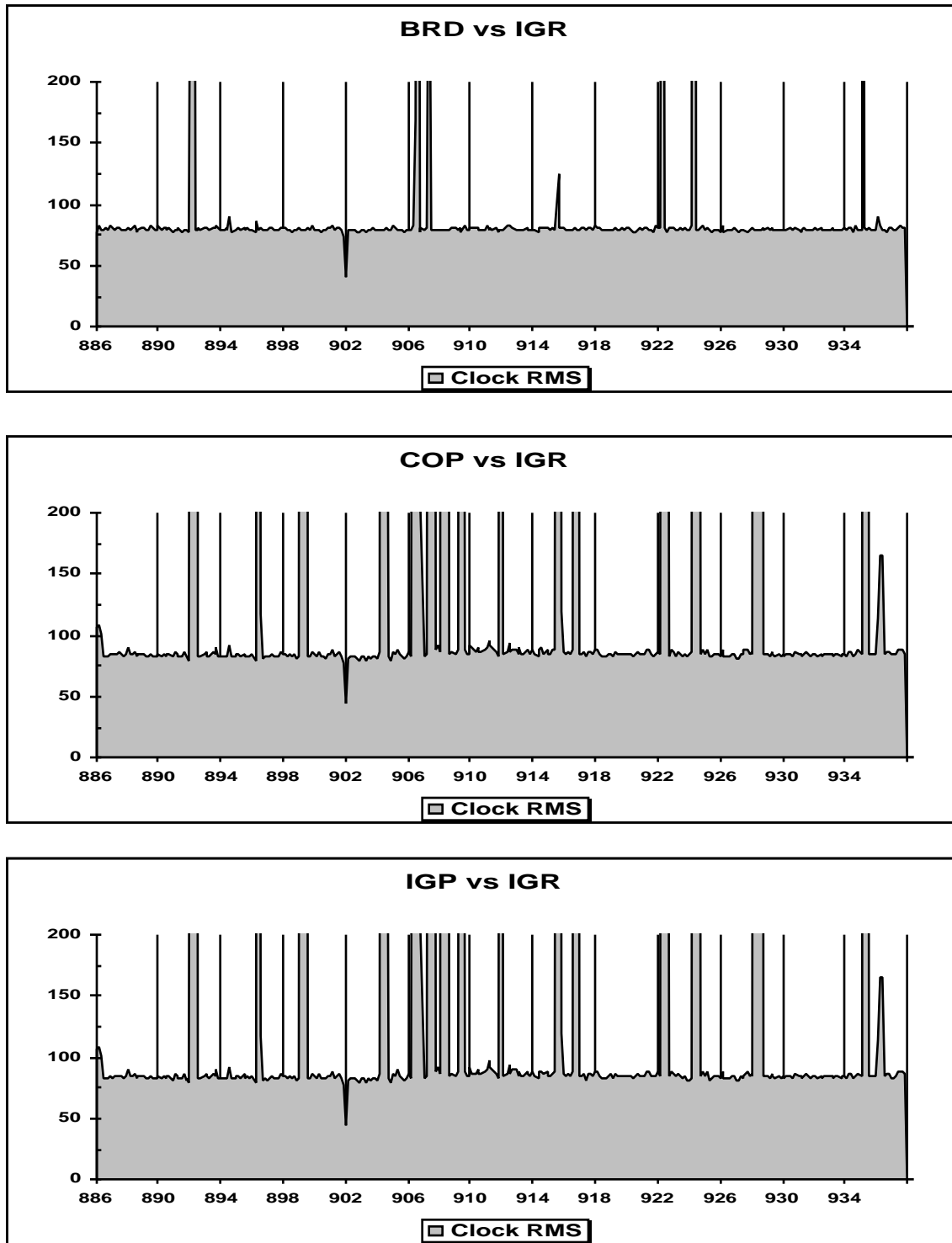


Figure 30. 1997 Prediction Daily clock RMS

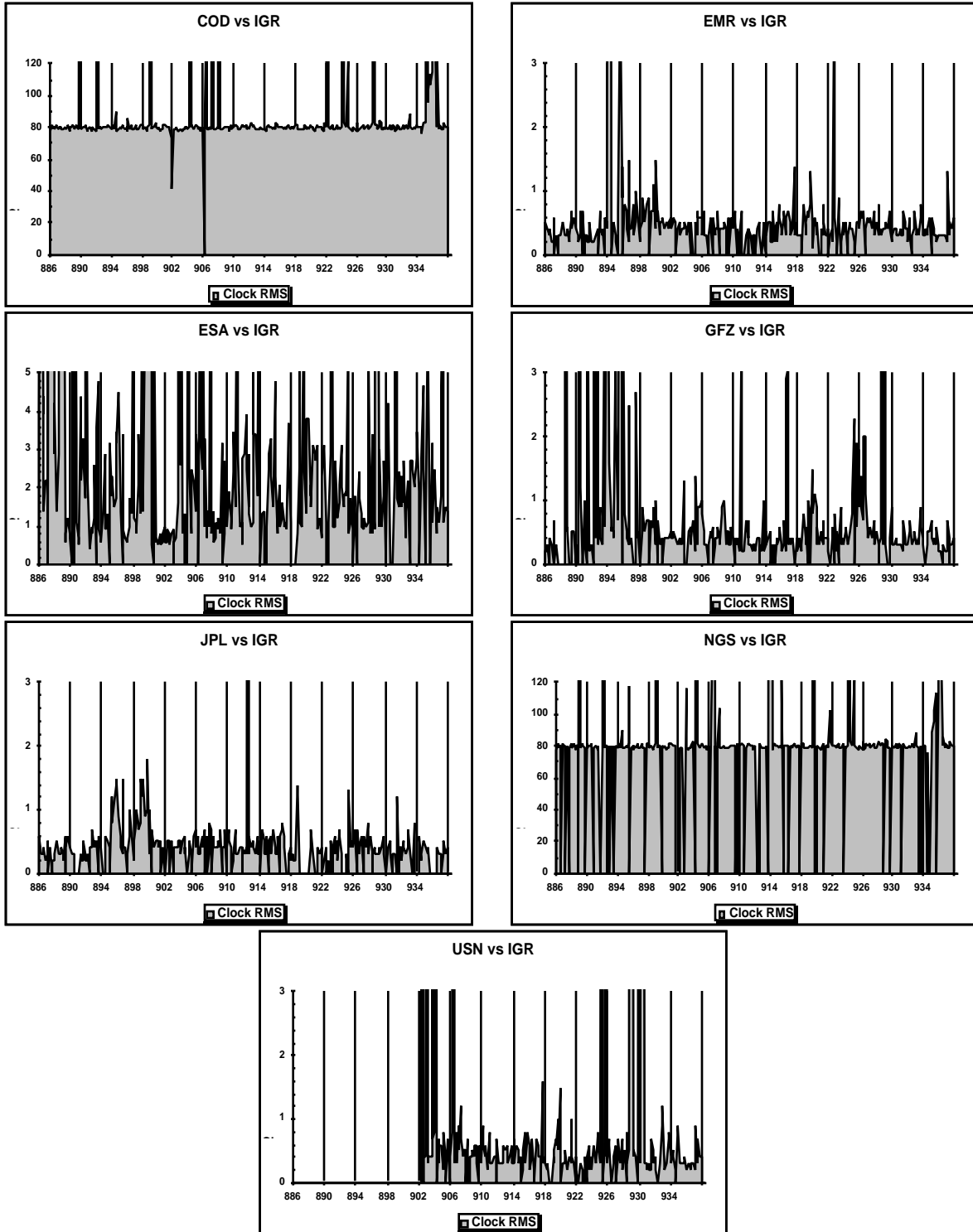


Figure 31. 1997 Rapid Daily clock RMS

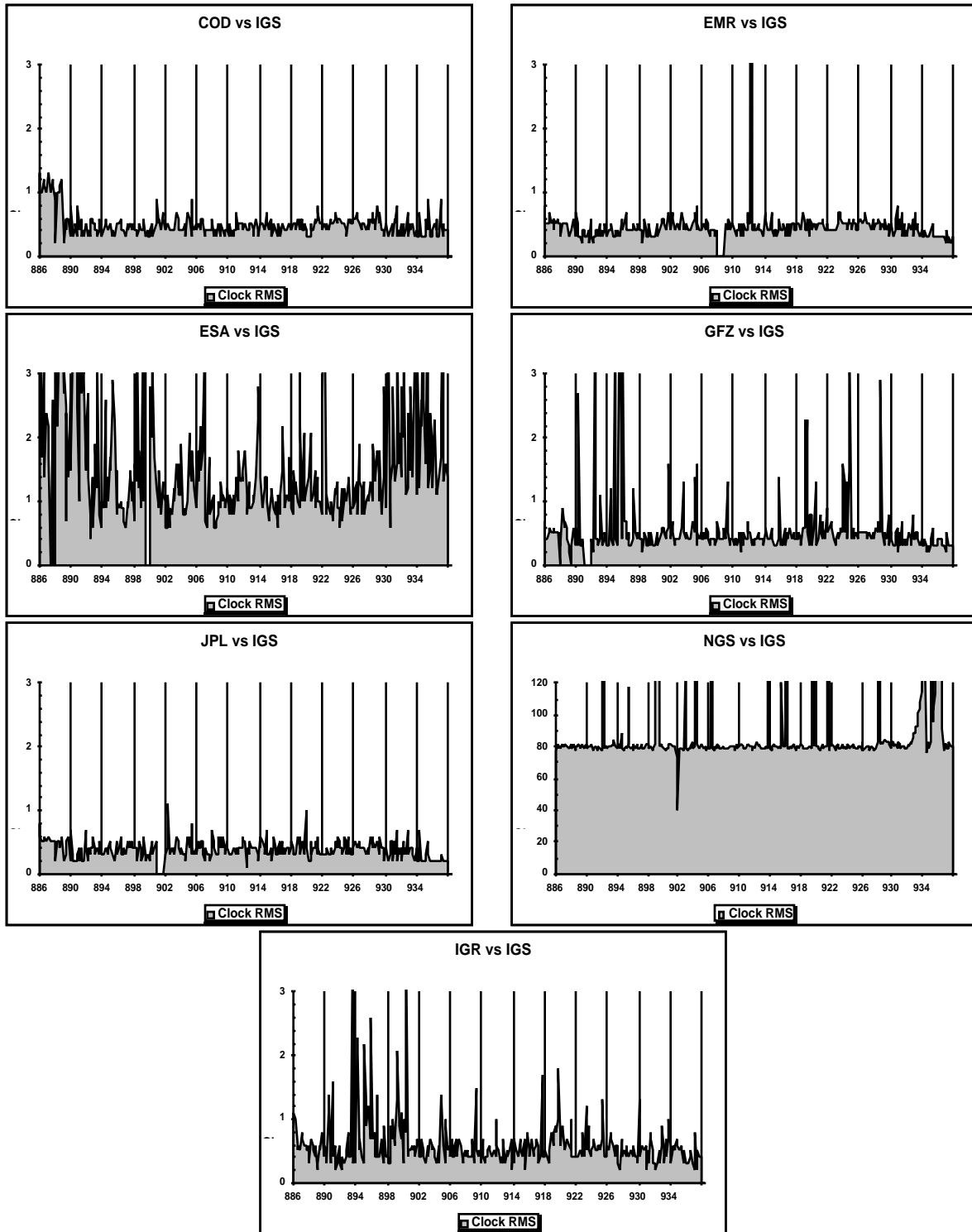


Figure 32. 1997 Final Daily clock RMS

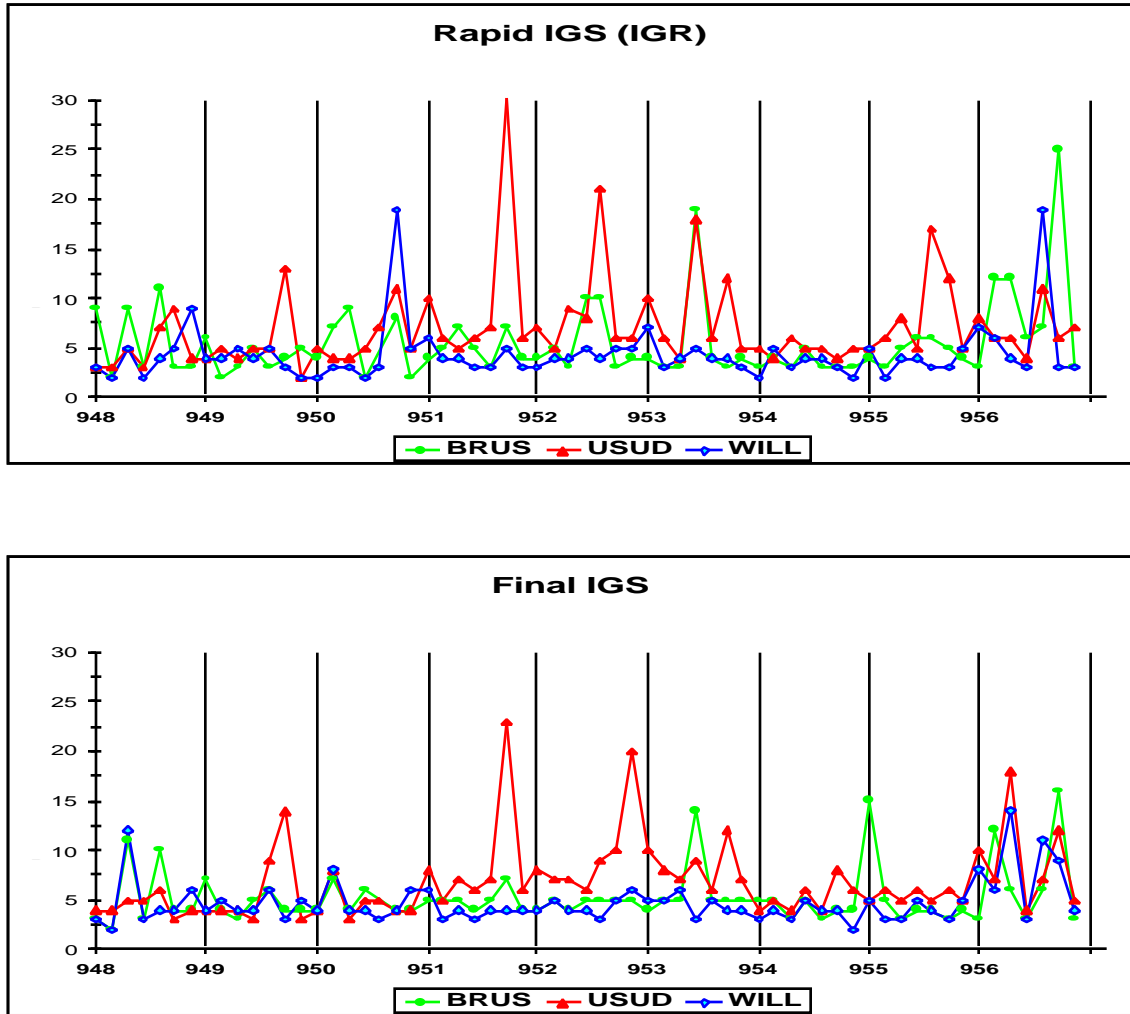


Figure 33. Precise Point Positioning (Navigation) using phase data and JPL's GIPSY-OASIS II software. The top graphic shows the 3D-RMS for the Rapid IGS (IGR) while the bottom one shows the 3D-RMS for the Final IGS.

This page intentionally left blank.