

Figure 26: 1998 Broadcast and Prediction Daily orbit position rms

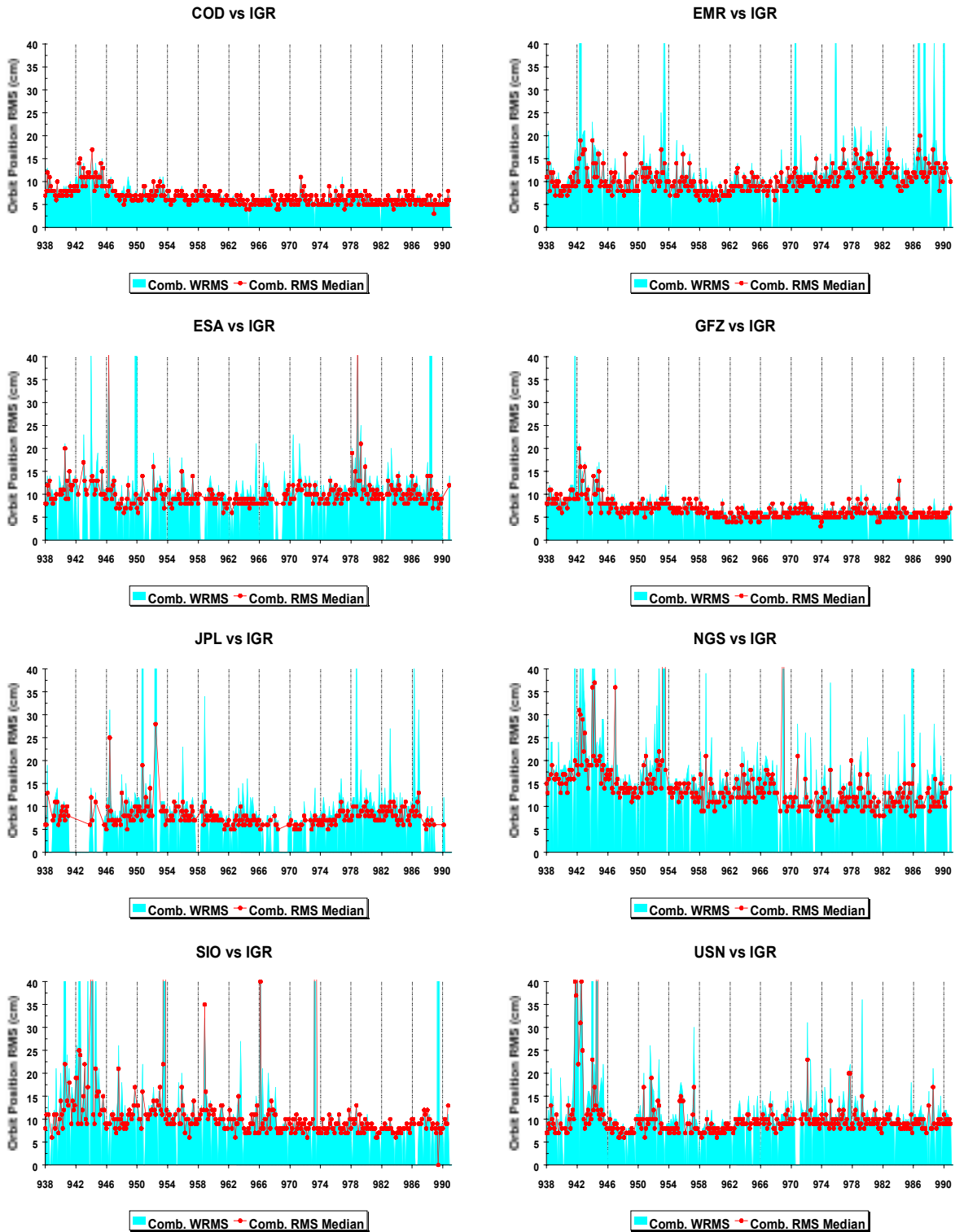


Figure 27: 1998 Rapid Daily orbit position rms

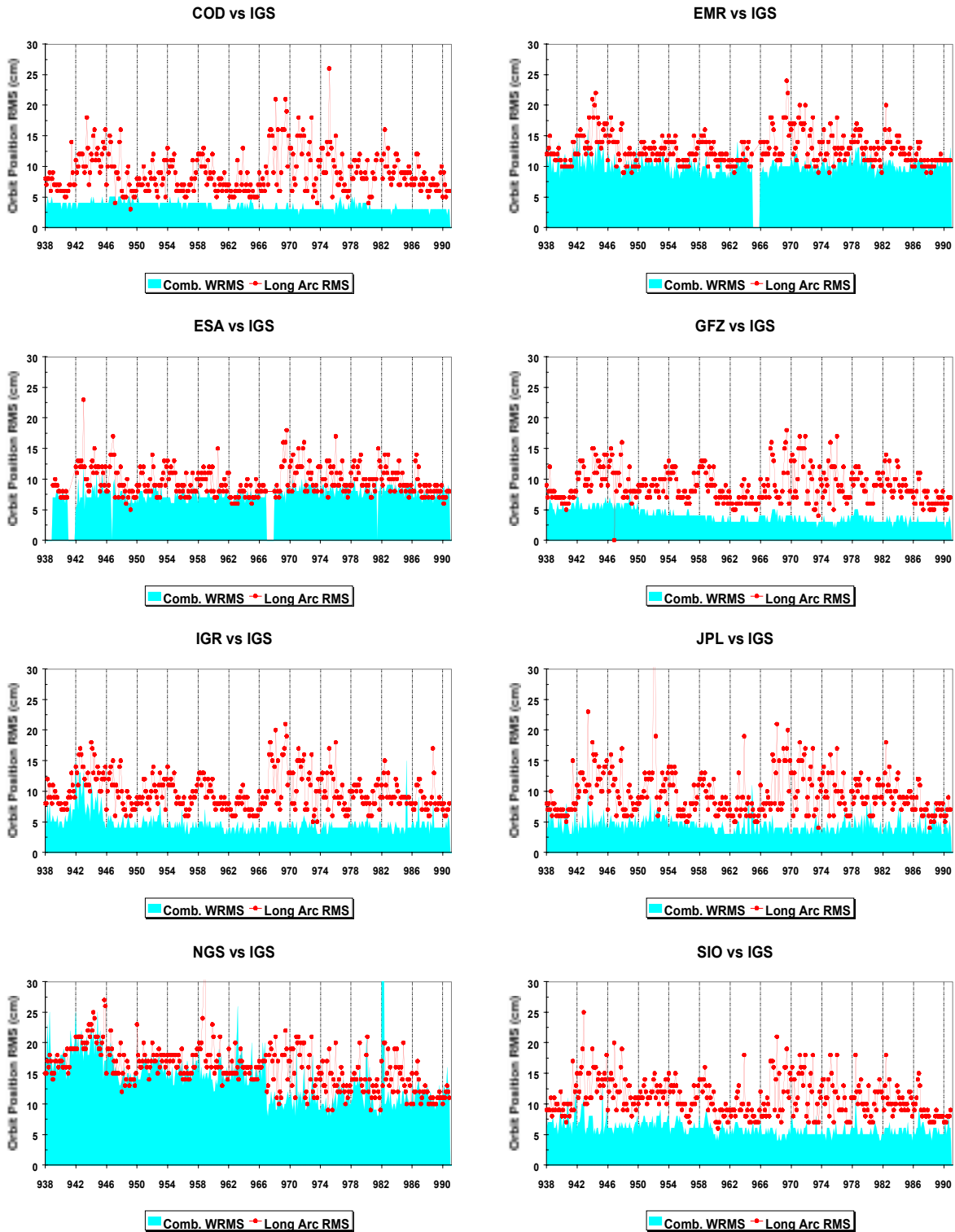


Figure 28: 1998 Final Daily orbit position rms

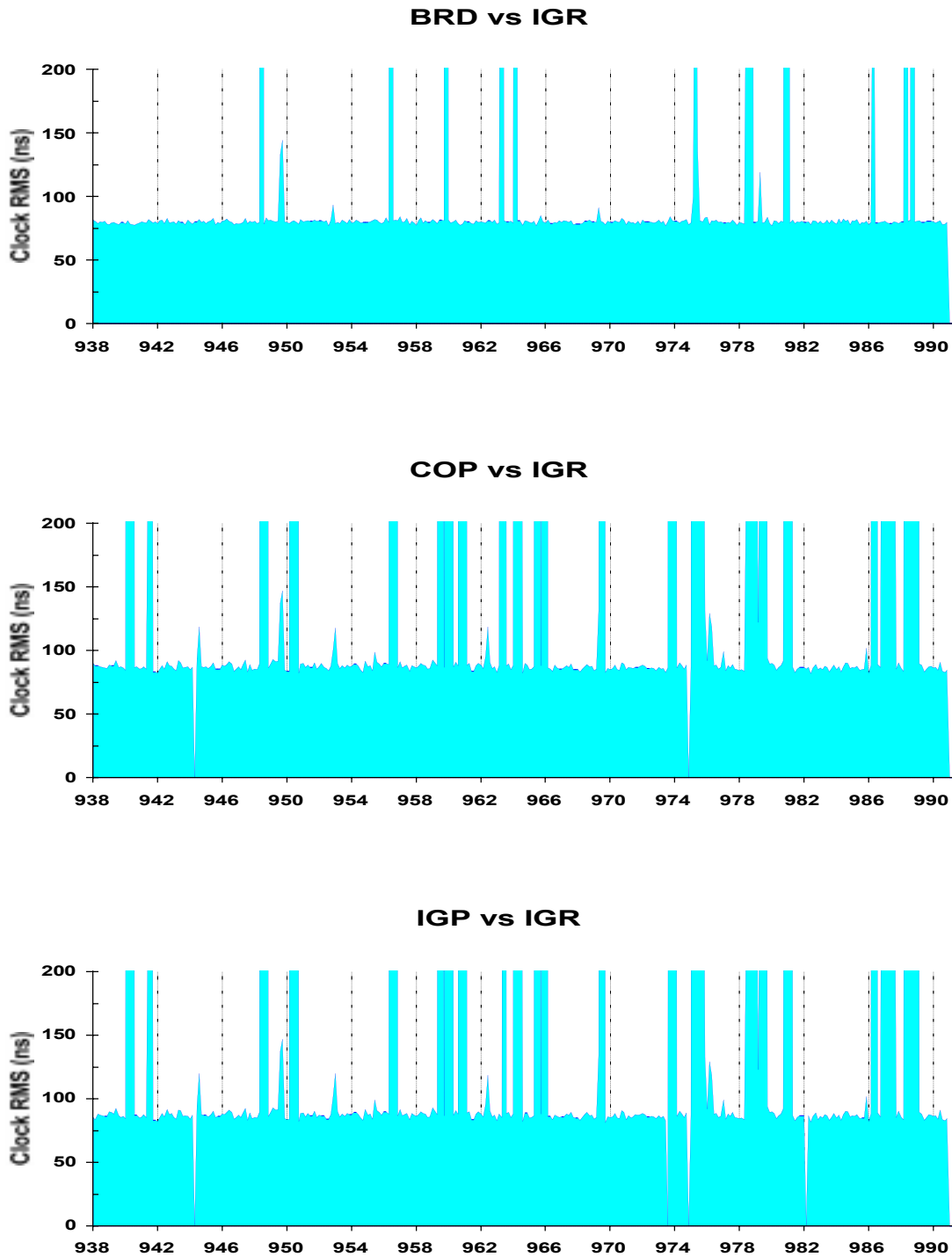


Figure 29: 1998 Broadcast and Prediction Daily clock rms

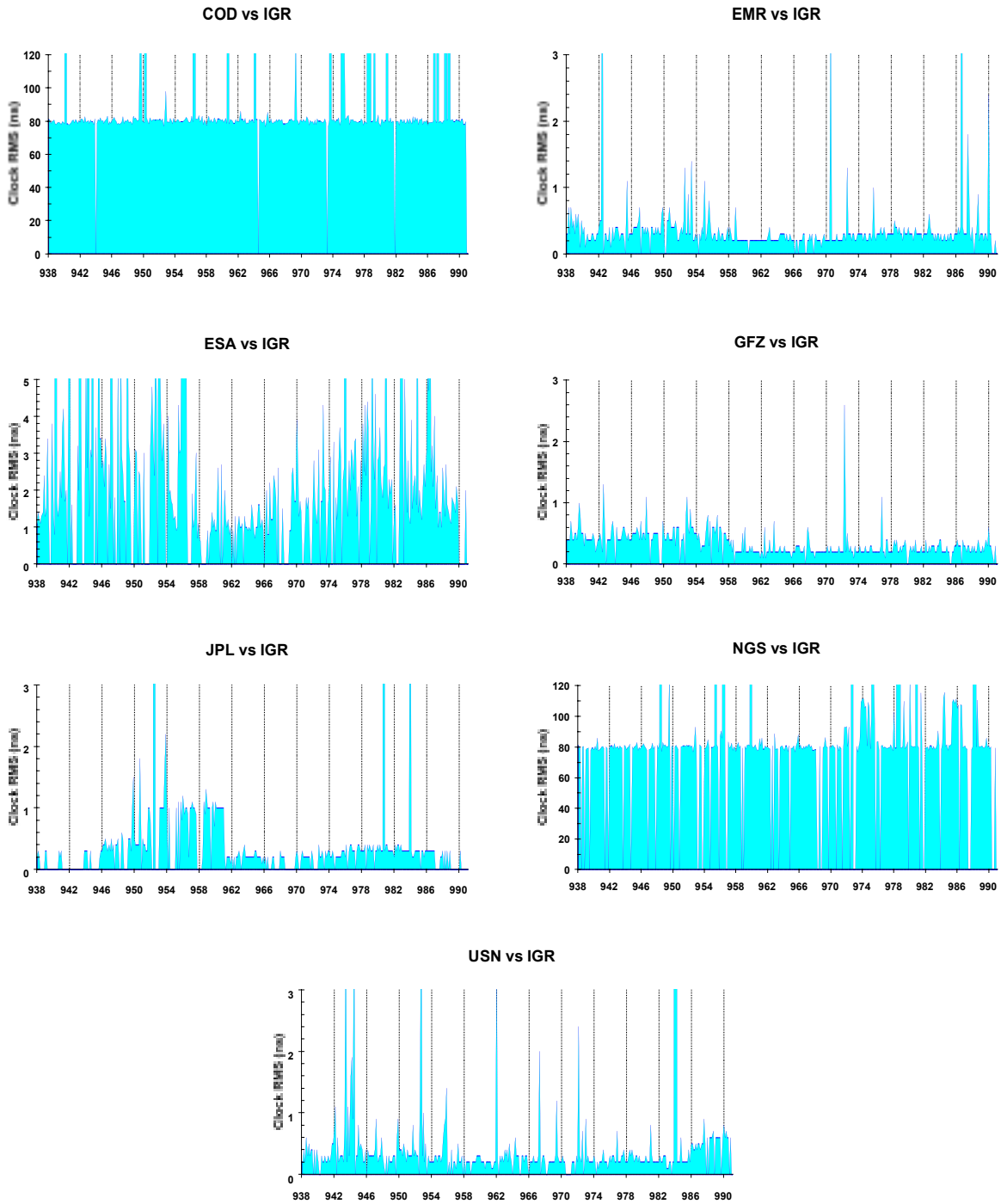


Figure 30: 1998 Rapid Daily clock rms.

Note: An unconventional PRN13 antenna offset used by JPL up to Wk 961 caused an apparent increase of clock RMS for JPL. A small increase can also be noticed up to Wk 958/3 for IGR and other ACs (see section 2.6).

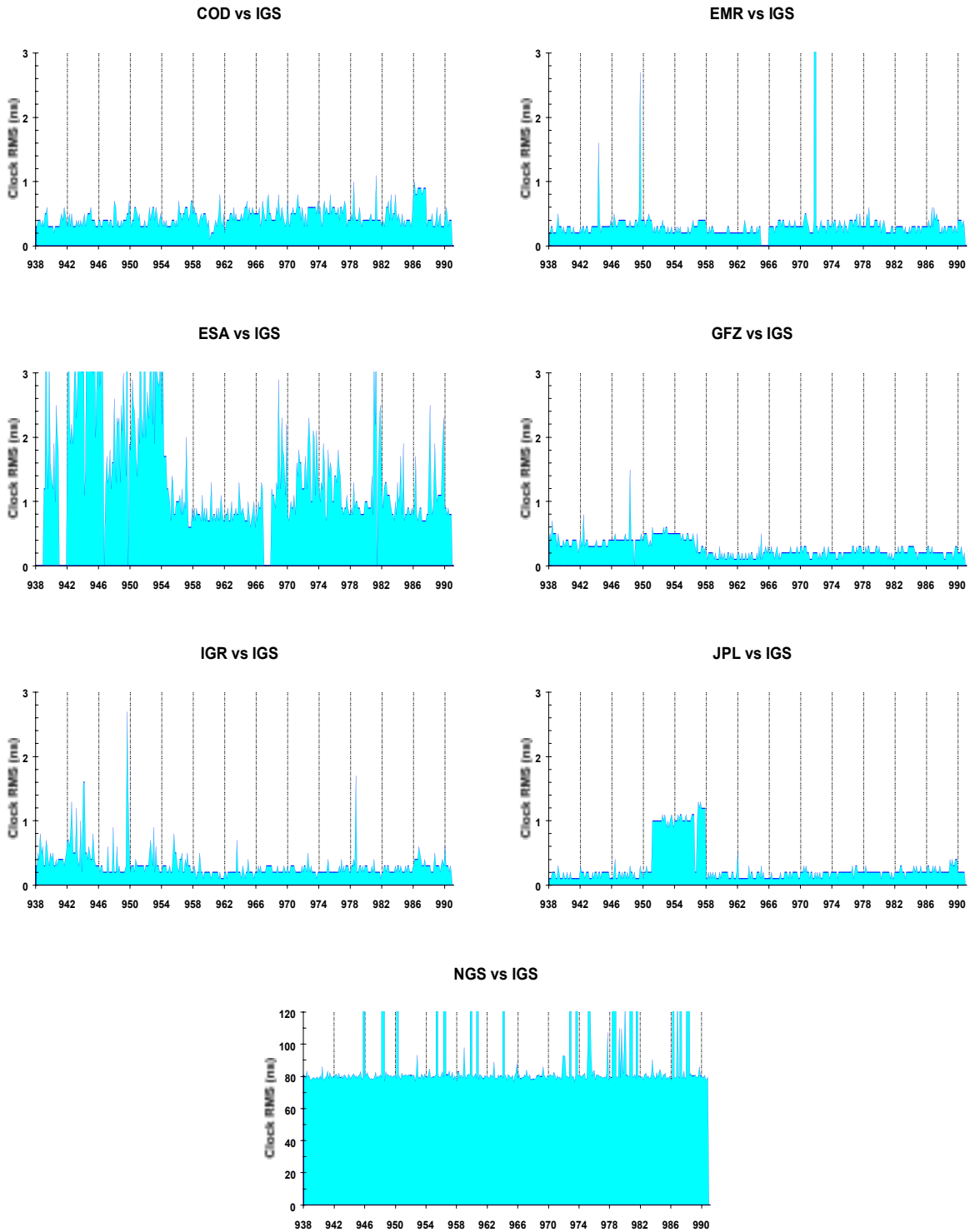


Figure 31: 1998 Final Daily clock rms.

Note: An unconventional PRN13 antenna offset used by JPL up to Wk 958 caused an apparent increase of clock RMS for JPL, IGS and other ACs (see section 2.6).