

Figure 10: COD 1998: Rapid daily seven-parameter Helmert transformations (X, Y and Z Translations are each offset by 0.1 metre; X, Y, Z Rotations and Y and X pole differences are each offset by 2 mas)

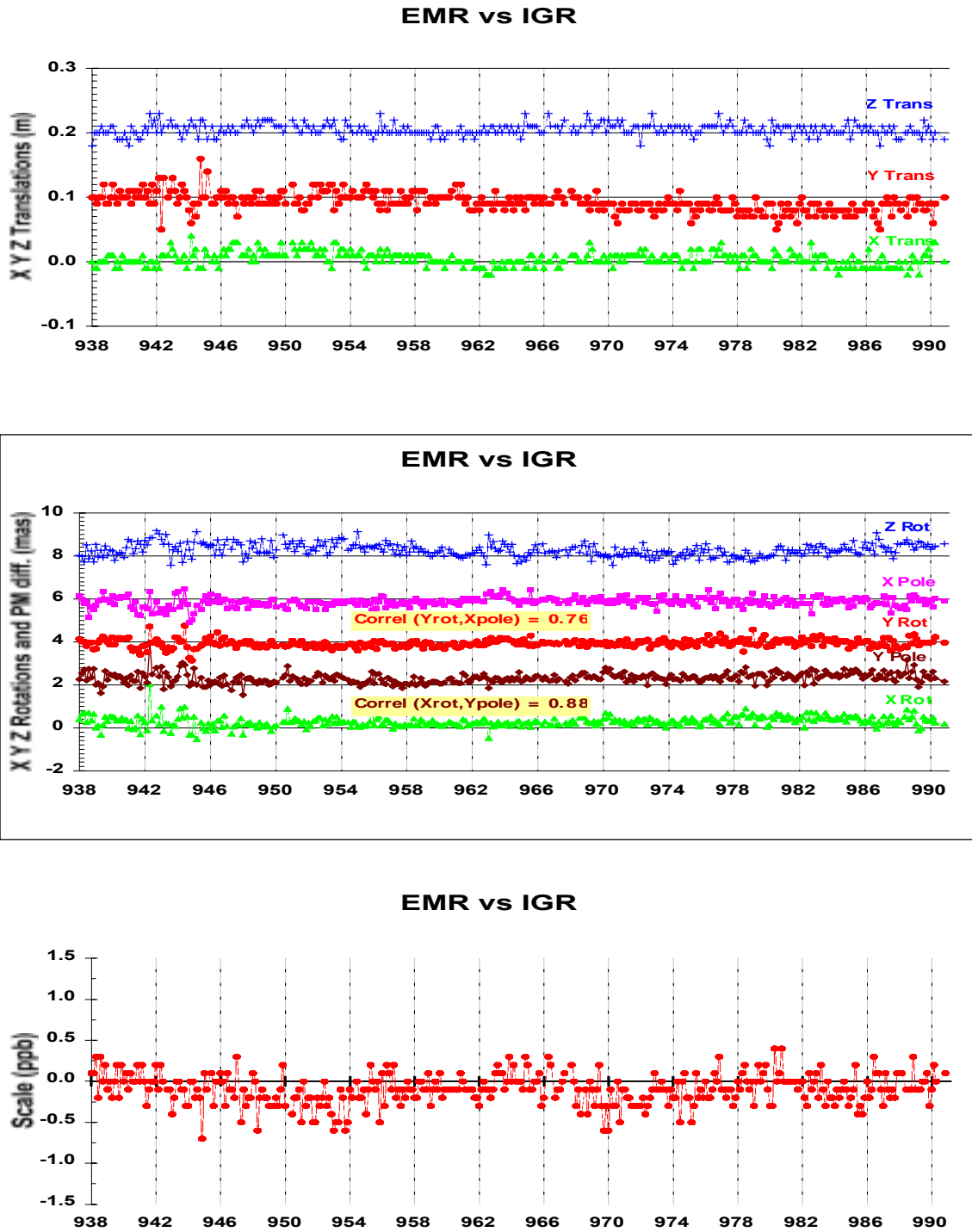


Figure 11: EMR 1998: Rapid daily seven-parameter Helmert transformations (X, Y and Z Translations are each offset by 0.1 metre; X, Y, Z Rotations and Y and X pole differences are each offset by 2 mas)

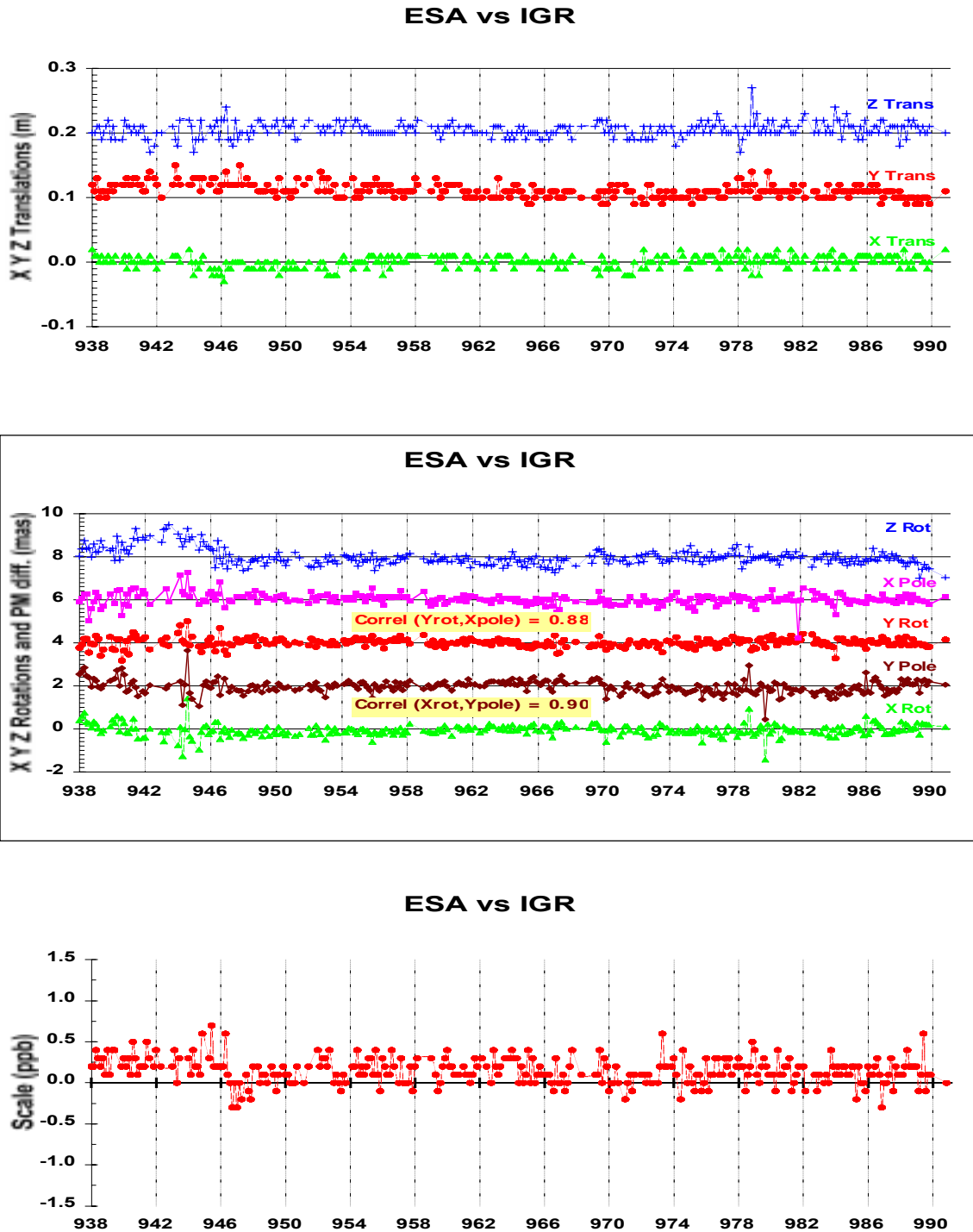


Figure 12: ESA 1998: Rapid daily seven-parameter Helmert transformations (X, Y and Z Translations are each offset by 0.1 metre; X, Y, Z Rotations and Y and X pole differences are each offset by 2 mas)

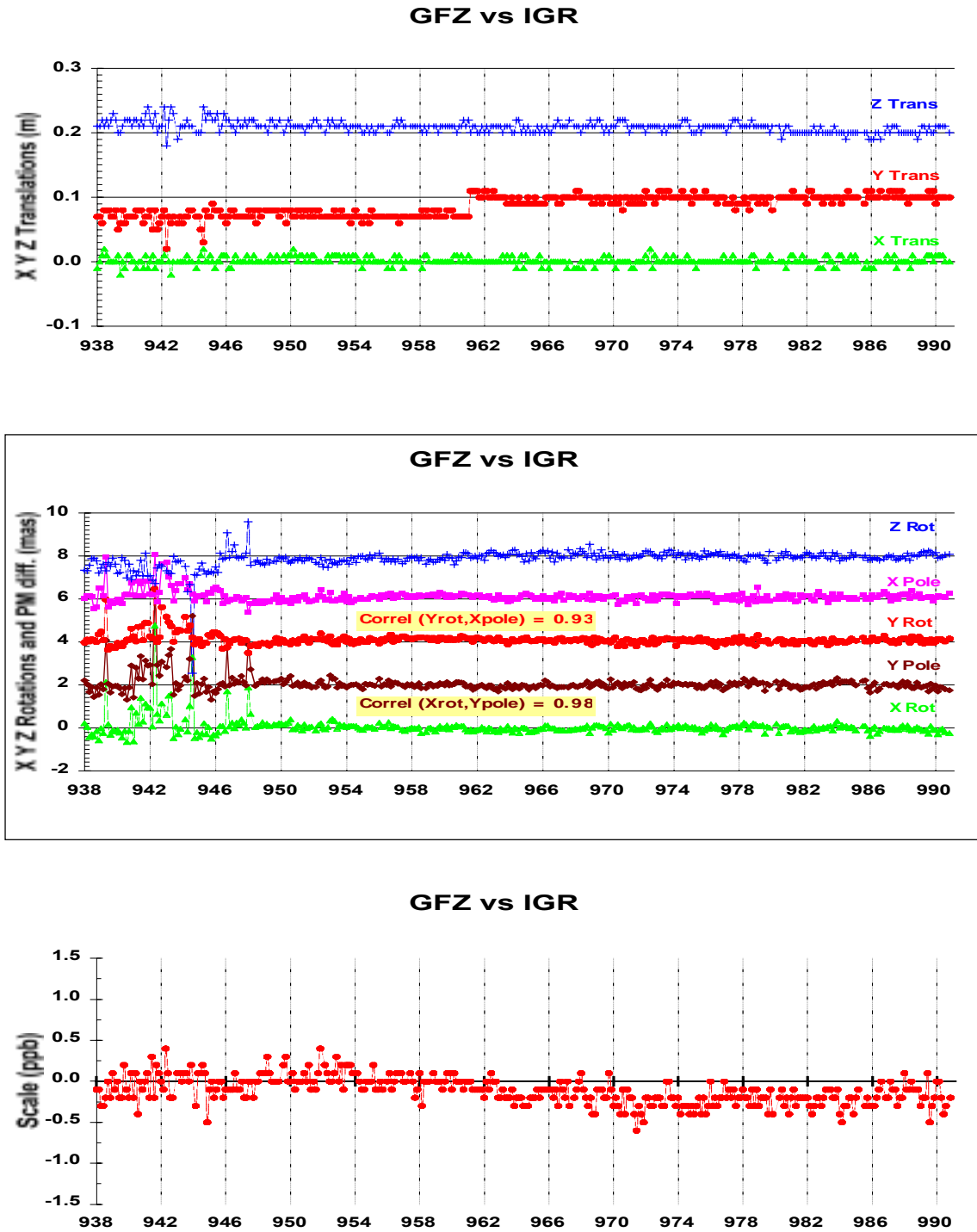


Figure 13: GFZ 1998: Rapid daily seven-parameter Helmert transformations (X, Y and Z Translations are each offset by 0.1 metre; X, Y, Z Rotations and Y and X pole differences are each offset by 2 mas)

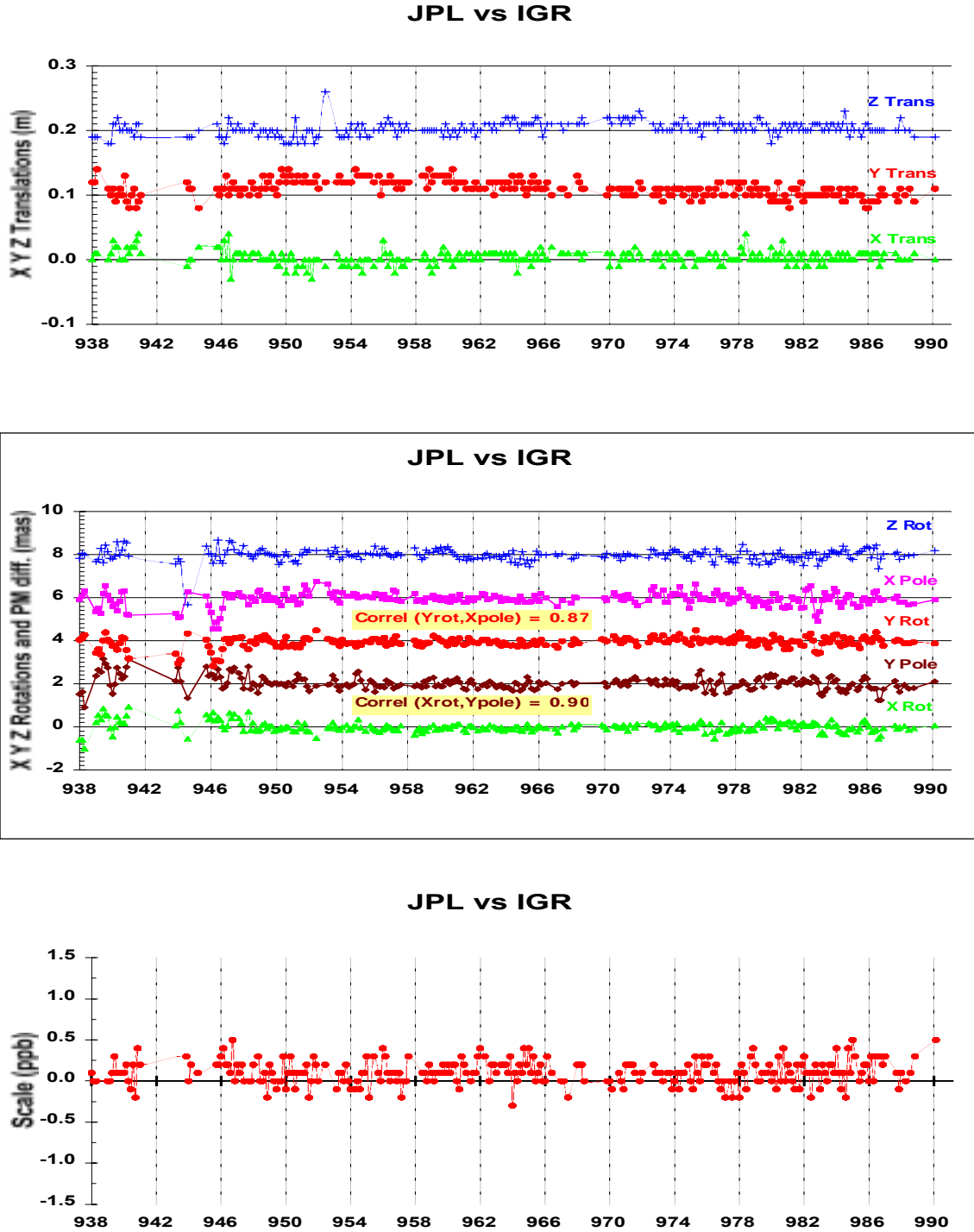


Figure 14: JPL 1998: Rapid daily seven-parameter Helmert transformations (X, Y and Z Translations are each offset by 0.1 metre; X, Y, Z Rotations and Y and X pole differences are each offset by 2 mas)

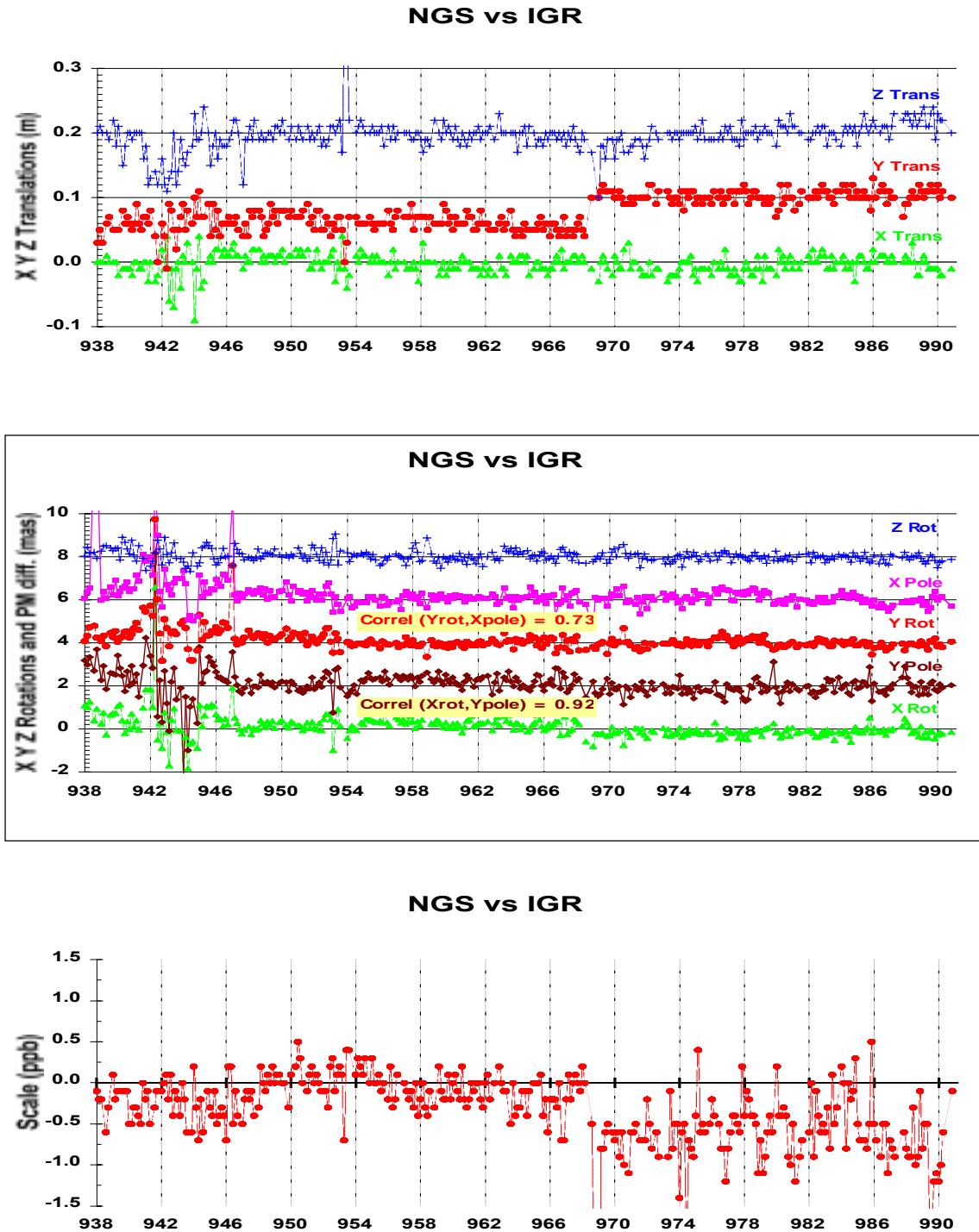


Figure 15: NGS 1998: Rapid daily seven-parameter Helmert transformations (X, Y and Z Translations are each offset by 0.1 metre; X, Y, Z Rotations and Y and X pole differences are each offset by 2 mas)

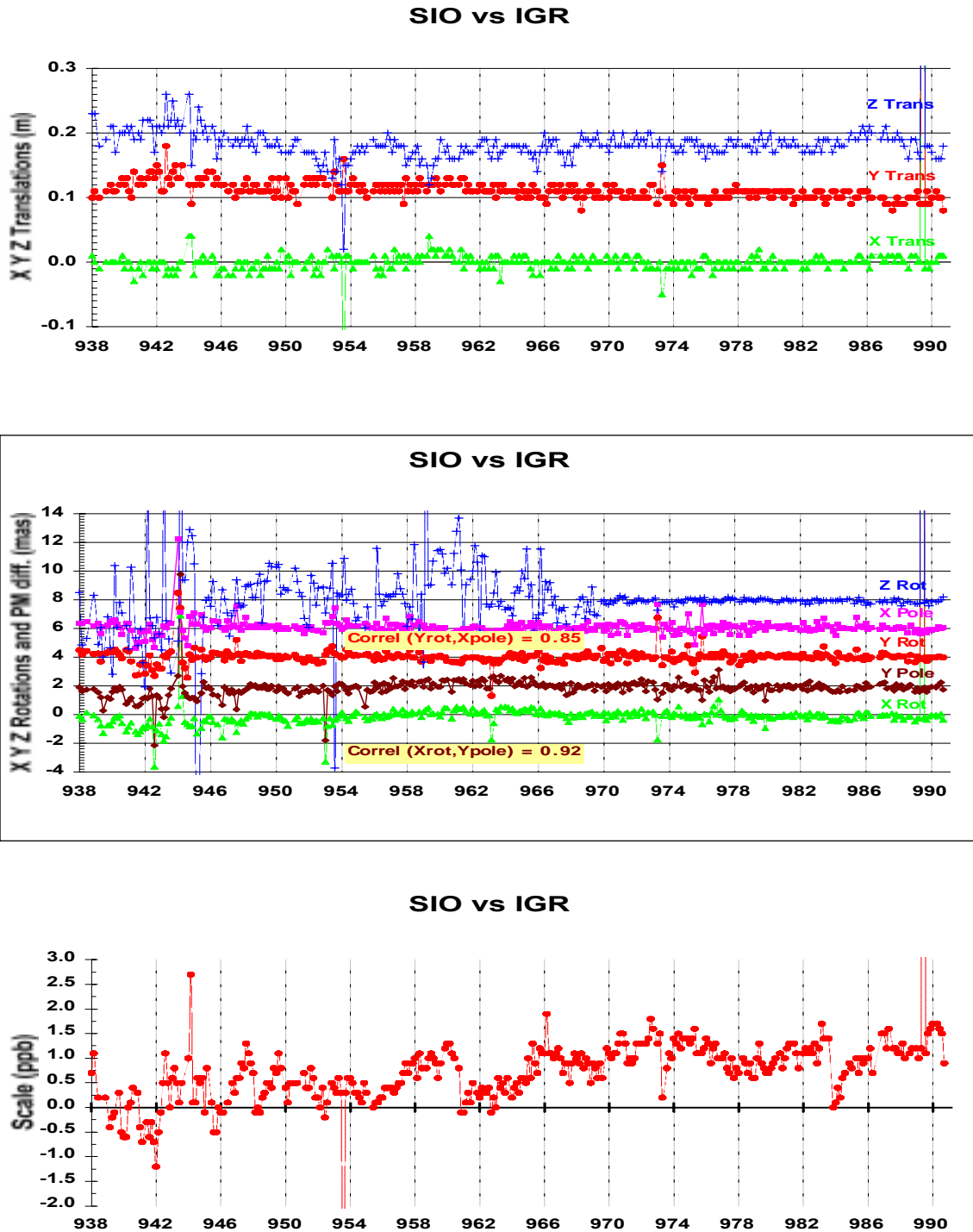


Figure 16: SIO 1998: Rapid daily seven-parameter Helmert transformations (X, Y and Z Translations are each offset by 0.1 metre; X, Y, Z Rotations and Y and X pole differences are each offset by 2 mas)

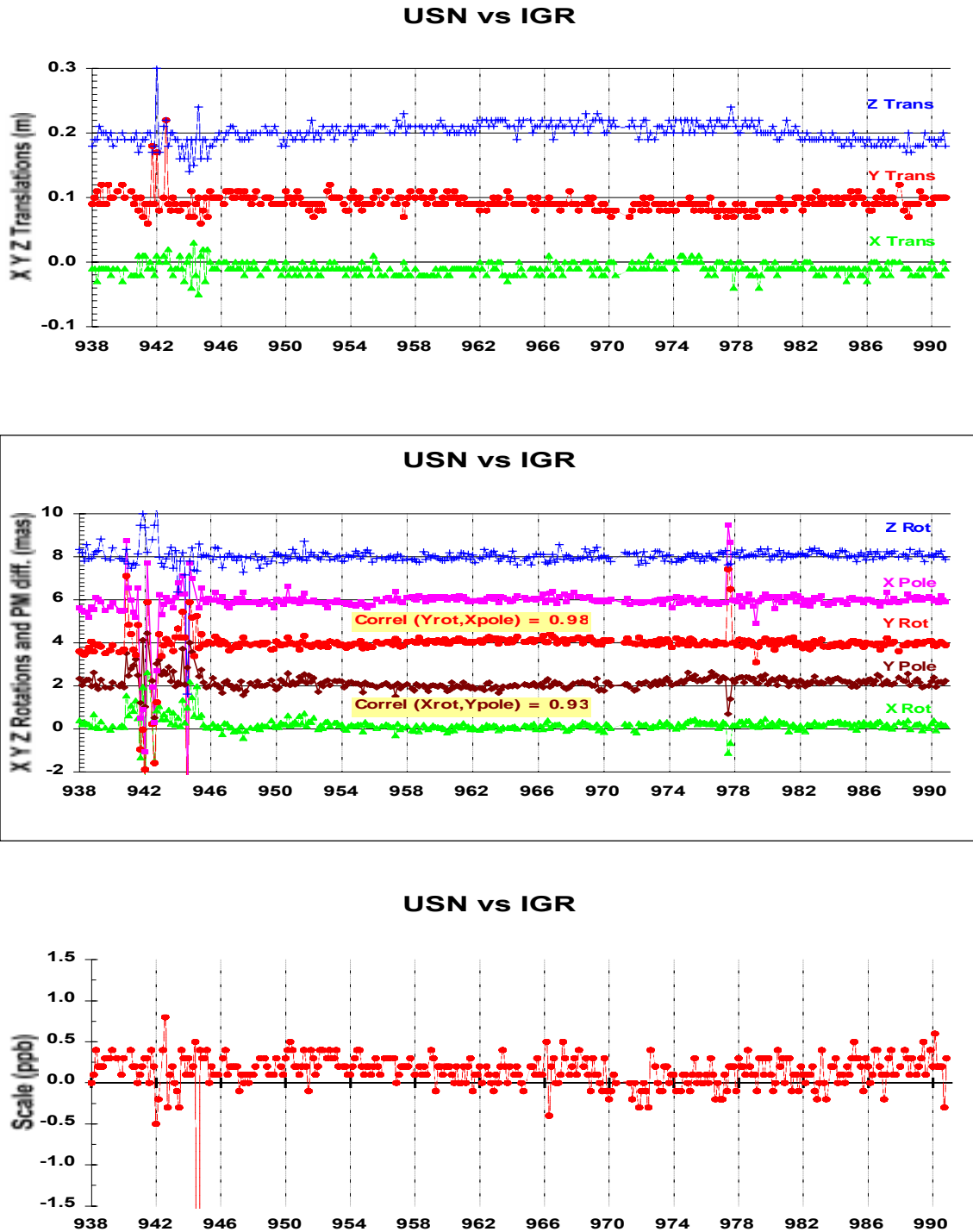


Figure 17: USN 1998: Rapid daily seven-parameter Helmert transformations (X, Y and Z Translations are each offset by 0.1 metre; X, Y, Z Rotations and Y and X pole differences are each offset by 2 mas)